

Datasheet for ABIN2669889

**Donkey anti-Mouse IgG (Heavy & Light Chain) Antibody (PE) -  
Preadsorbed**[Go to Product page](#)**2** Images

## Overview

Quantity:	500 µg
Target:	IgG
Binding Specificity:	Heavy & Light Chain
Reactivity:	Mouse
Host:	Donkey
Clonality:	Polyclonal
Conjugate:	PE
Application:	Flow Cytometry (FACS), Fluorescence Microscopy (FM)

## Product Details

Immunogen:	Immunogen: F(ab') <sub>2</sub> Anti-Mouse IgG whole molecule was produced by repeated immunization with Mouse IgG whole molecule in donkey. Immunogen Type: Native Protein
Isotype:	IgG
Fragment:	F(ab') <sub>2</sub> fragment
Specificity:	Assay by immunoelectrophoresis resulted in a single precipitin arc against anti-Phycoerythrin, anti-Donkey Serum, Mouse IgG and Mouse Serum.
Cross-Reactivity:	Mouse (Murine)
Characteristics:	F(ab') <sub>2</sub> Anti-Mouse IgG whole molecule generated in donkey detects specifically Mouse IgG whole molecule. This secondary antibody anti-Mouse is ideal for investigators who routinely perform ELISA, Sandwich ELISA, titration assays, western-blot, immunoprecipitation and more

## Product Details

---

generally immunoassays.

Purification: Preadsorption: Solid phase absorption

Labeling Ratio: 5.6

## Target Details

---

Target: IgG

Abstract: [IgG Products](#)

Target Type: Antibody

Background: Synonyms: Donkey F(ab')<sub>2</sub> Anti-Mouse IgG Antibody Phycoerythrin Conjugation, Donkey Fab2 Anti-Mouse IgG PE Conjugated Antibody  
Background: F(ab')<sub>2</sub> Anti-Mouse IgG whole molecule generated in donkey detects specifically Mouse IgG whole molecule. This secondary antibody anti-Mouse is ideal for investigators who routinely perform ELISA, Sandwich ELISA, titration assays, western-blot, immunoprecipitation and more generally immunoassays.

## Application Details

---

Application Notes: Application Note: Suitable for immunomicroscopy and flow cytometry or FACS analysis as well as other antibody based fluorescent assays requiring extremely low background levels, absence of F(c) mediated binding, lot-to-lot consistency, high titer and specificity. The maximum amount of reagent required to stain 1 x 10<sup>6</sup> cells in flow cytometry is approximately 1.0 µg of antibody conjugate. Lesser amounts of reagent may be sufficient for staining. Optimal titers for other applications should be determined by the researcher. As a general guideline dilutions of 1:100 to 1:250 should be suitable for most applications.  
Flow Cytometry Dilution: 1:100 - 1:250  
IF Microscopy Dilution: 1:100 - 1:250

Comment: Post Translational Modification: Phosphorylation

Restrictions: For Research Use only

## Handling

---

Format: Lyophilized

Reconstitution: Reconstitution Volume: 1.0 mL  
Reconstitution Buffer: Restore with deionized water (or equivalent)

## Handling

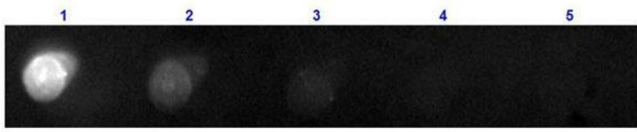
Concentration:	0.5 mg/mL
Buffer:	Buffer: 0.02 M Potassium Phosphate, 0.15 M Sodium Chloride, pH 7.2 Stabilizer: 10 mg/mL Bovine Serum Albumin (BSA) - Immunoglobulin and Protease free Preservative: 0.01 % (w/v) Sodium Azide
Preservative:	Sodium azide
Precaution of Use:	This product contains Sodium azide: a POISONOUS AND HAZARDOUS SUBSTANCE which should be handled by trained staff only.
Handling Advice:	Product is photosensitive and should be protected from light. Avoid cycles of freezing and thawing.
Storage:	RT, 4 °C
Storage Comment:	Store vial at 4 °C prior to restoration. For extended storage aliquot contents and freeze at -24 °C or below. This product is stable for several weeks at 4 °C as an undiluted liquid.
Expiry Date:	12 months

## Images



### Dot Blot

**Image 1.** Dot Blot of F(ab')<sub>2</sub> Donkey Anti-Mouse IgG Antibody Phycoerythrin conjugated Min X Bv Ch Gt GP Ham Hs Hu Rb Rt & Sh Serum Proteins. Antigen: Mouse IgG. Load: 100 ng, 33.3 ng, 11.1 ng, 3.7 ng or 1.23 ng as indicated. Primary antibody: N/A. Secondary antibody: F(ab')<sub>2</sub> Donkey Anti-Mouse IgG Antibody Phycoerythrin conjugated Min X Bv Ch Gt GP Ham Hs Hu Rb Rt & Sh Serum Proteins at 1:1,000 for 60 min at RT. Block: Blocking Buffer for Fluorescent Western Blotting (ABIN925618) for 60 min at RT.



### Dot Blot

**Image 2.** Dot Blot results of Donkey F(ab')<sub>2</sub> Anti-Mouse IgG Antibody Phycoerythrin Conjugated. Dots are Mouse IgG at (1) 100ng, (2) 33.3ng, (3) 11.1ng, (4) 3.70ng, (5) 1.23ng. Blocking: ABIN925618 for 60 min at RT. Primary Antibody: Donkey F(ab')<sub>2</sub> Anti-Mouse IgG Antibody Phycoerythrin at 1µg/mL for 1hr at RT. Secondary Antibody: none. Imaged with BioRad ChemiDoc, Rhodamine filter.