

Datasheet for ABIN2669891

**Donkey anti-Rabbit IgG (Heavy & Light Chain) Antibody (PE) -
Preadsorbed**[Go to Product page](#)**1** Image

Overview

Quantity:	500 µg
Target:	IgG
Binding Specificity:	Heavy & Light Chain
Reactivity:	Rabbit
Host:	Donkey
Clonality:	Polyclonal
Conjugate:	PE
Application:	Immunohistochemistry (IHC), Western Blotting (WB), Flow Cytometry (FACS), Fluorescence Microscopy (FM)

Product Details

Immunogen:	Immunogen: Fab2 Anti-Rabbit IgG was produced by repeated immunization with Rabbit IgG whole molecule in donkey. Immunogen Type: Native Protein
Isotype:	IgG
Fragment:	F(ab') ₂ fragment
Specificity:	Assay by immunoelectrophoresis resulted in a single precipitin arc against anti-Phycoerythrin, anti-Donkey Serum, Rabbit IgG and Rabbit Serum.
Cross-Reactivity:	Rabbit
Characteristics:	F(ab') ₂ RABBIT IgG [H&L] Antibody Phycoerythrin conjugated Pre-adsorbed was generated by enzymatic cleavage and subsequent separation from the Fc fragment. Because of their smaller

Product Details

size, F(ab)₂ fragments offer several advantages over intact antibodies for use in certain immunochemical techniques and experimental applications. F(ab)₂ fragments penetrate into tissue samples and show better antigen recognition and signal generation in IHC. F(ab)₂ fragments lack the Fc region and therefore do not bind Fc receptors which effectively lowers background staining. F(ab)₂ RABBIT IgG [H&L] Antibody Phycoerythrin conjugated Pre-adsorbed is ideal for investigators who routinely perform flow cytometry, immunohistochemistry or IHC and other immunoassays.

Purification: Preadsorption: Solid phase absorption

Target Details

Target: IgG

Abstract: [IgG Products](#)

Target Type: Antibody

Background: Synonyms: Donkey F(ab)₂ Anti-Rabbit IgG Phycoerythrin Conjugated Antibody, Donkey Fab2 Anti-Rabbit IgG Antibody PE Conjugation
Background: F(ab)₂ Anti-Rabbit IgG [H&L] Antibody Phycoerythrin Conjugated Pre-adsorbed was generated by enzymatic cleavage and subsequent separation from the Fc fragment. Because of their smaller size, F(ab)₂ fragments offer several advantages over intact antibodies for use in certain immunochemical techniques and experimental applications. F(ab)₂ fragments penetrate into tissue samples and show better antigen recognition and signal generation in IHC. F(ab)₂ fragments lack the Fc region and therefore do not bind Fc receptors which effectively lowers background staining. F(ab)₂ Rabbit IgG [H&L] Antibody Phycoerythrin conjugated Pre-adsorbed is ideal for investigators who routinely perform flow cytometry, immunohistochemistry or IHC and other immunoassays.

Application Details

Application Notes: Immunohistochemistry Dilution: User Optimized
Application Note: F(ab)₂ Rabbit IgG Phycoerythrin Conjugated Antibody was tested in WB, and is suitable for immunomicroscopy, flow cytometry or FACS analysis, as well as other antibody based fluorescent assays requiring extremely low background levels, absence of F(c) mediated binding, lot-to-lot consistency, high titer and specificity. The maximum amount of reagent required to stain 1 x 10⁶ cells in flow cytometry is approximately 1.0 µg of antibody conjugate. Lesser amounts of reagent may be sufficient for staining. Optimal titers for other

Application Details

applications should be determined by the researcher. As a general guideline dilutions of 1:100 to 1:250 should be suitable for most applications.

Flow Cytometry Dilution: 1:100 - 1:250

Western Blot Dilution: 1:1,000

IF Microscopy Dilution: 1:100 - 1:200

Restrictions: For Research Use only

Handling

Format: Lyophilized

Reconstitution: Reconstitution Volume: 1.0 mL
Reconstitution Buffer: Restore with deionized water (or equivalent)

Concentration: 0.5 mg/mL

Buffer: Buffer: 0.02 M Potassium Phosphate, 0.15 M Sodium Chloride, pH 7.2
Stabilizer: 10 mg/mL Bovine Serum Albumin (BSA) - Immunoglobulin and Protease free
Preservative: 0.01 % (w/v) Sodium Azide

Preservative: Sodium azide

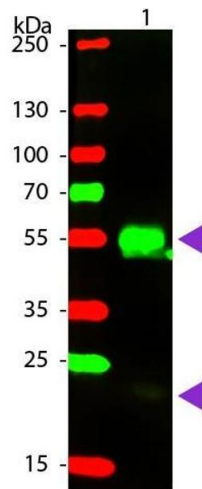
Precaution of Use: This product contains Sodium azide: a POISONOUS AND HAZARDOUS SUBSTANCE which should be handled by trained staff only.

Handling Advice: Product is photosensitive and should be protected from light.

Storage: RT, 4 °C

Storage Comment: Store vial at 4 °C prior to restoration. For extended storage aliquot contents and freeze at -24 °C or below. This product is stable for several weeks at 4 °C as an undiluted liquid.

Expiry Date: 12 months



Western Blotting

Image 1. Western blot of Phycoerythrin conjugated Donkey F(ab')₂ Anti-Rabbit IgG Pre-Adsorbed secondary antibody. Lane 1: Rabbit IgG. Lane 2: None. Load: 50 ng per lane. Primary antibody: None. Secondary antibody: Phycoerythrin donkey secondary antibody at 1:1,000 for 60 min at RT. Blocking: ABIN925618 for 30 min at RT. Predicted/Observed size: 25 & 55 kDa, 25 & 55 kDa for Rabbit IgG. Other band(s): None.