

Datasheet for ABIN2682977
anti-BACE1 antibody (AA 112-324)

6 Images

[Go to Product page](#)

Overview

Quantity:	0.1 mg
Target:	BACE1
Binding Specificity:	AA 112-324
Reactivity:	Human, Mouse, Rat
Host:	Mouse
Clonality:	Monoclonal
Application:	Western Blotting (WB), ELISA, Immunocytochemistry (ICC), Flow Cytometry (FACS)

Product Details

Immunogen:	Purified recombinant fragment of human BACE1 (AA: 112-324) expressed in E. coli.
Clone:	3C1C3
Isotype:	IgG1
Purification:	purified

Target Details

Target:	BACE1
Alternative Name:	BACE1 (BACE1 Products)
Background:	Description: Cerebral deposition of amyloid beta peptide is an early and critical feature of Alzheimer's disease. Amyloid beta peptide is generated by proteolytic cleavage of amyloid precursor protein (APP) by two proteases, one of which is the protein encoded by this gene. The encoded protein, a member of the peptidase A1 protein family, is a type I integral membrane

Target Details

glycoprotein and aspartic protease that is found mainly in the Golgi. Multiple transcript variants encoding different isoforms have been described for this gene. , ,
Aliases: ASP2, BACE, HSPC104

Molecular Weight: 55.7 kDa

Gene ID: 23621

HGNC: 23621

Application Details

Application Notes: ELISA: 1:10000, WB: 1:500 - 1:2000, ICC: 1:200 - 1:1000, FCM: 1:200 - 1:400

Restrictions: For Research Use only

Handling

Format: Liquid

Buffer: Purified antibody in PBS with 0.05 % sodium azide.

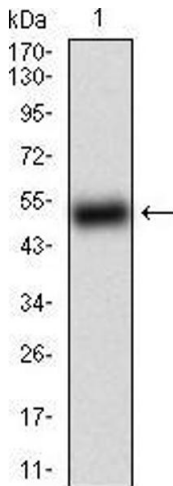
Preservative: Sodium azide

Precaution of Use: This product contains Sodium azide: a POISONOUS AND HAZARDOUS SUBSTANCE which should be handled by trained staff only.

Storage: 4 °C/-20 °C

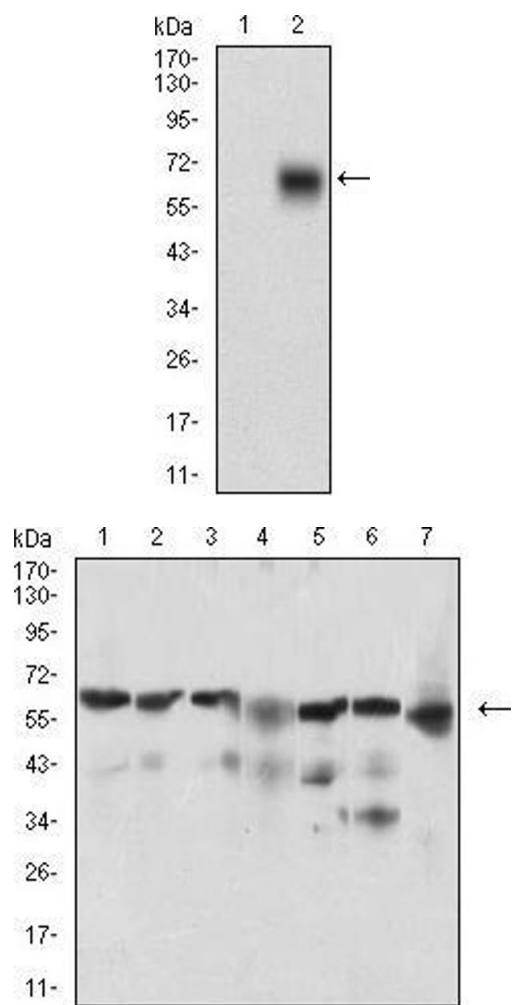
Storage Comment: 4°C, -20°C for long term storage

Images



Western Blotting

Image 1. Western blot analysis using BACE1 mAb against human BACE1 (AA: 112-324) recombinant protein. (Expected MW is 49.9 kDa)



Western Blotting

Image 2. Western blot analysis using BACE1 mAb against HEK293 (1) and BACE1 (AA: 112-324)-hlgGFc transfected HEK293 (2) cell lysate.

Western Blotting

Image 3. Western blot analysis using BACE1 mouse mAb against Hela (1), SK-N-SH (2), HepG2 (3), C6 (4), PC-12 (5), PANC-1 (6), NIH/3T3 (7) cell lysate.

Please check the [product details page](#) for more images. Overall 6 images are available for ABIN2682977.