

Datasheet for ABIN2682997
anti-KHDRBS2 antibody (AA 160-349)

6 Images

[Go to Product page](#)

Overview

Quantity:	0.1 mg
Target:	KHDRBS2
Binding Specificity:	AA 160-349
Reactivity:	Human, Mouse
Host:	Mouse
Clonality:	Monoclonal
Conjugate:	This KHDRBS2 antibody is un-conjugated
Application:	Western Blotting (WB), Immunohistochemistry (IHC), ELISA, Flow Cytometry (FACS)

Product Details

Immunogen:	Purified recombinant fragment of human KHDRBS2 (AA: 160-349) expressed in E. coli.
Clone:	7G8C10
Isotype:	IgG1
Purification:	purified

Target Details

Target:	KHDRBS2
Alternative Name:	KHDRBS2 (KHDRBS2 Products)
Background:	Description: RNA-binding protein that plays a role in the regulation of alternative splicing and influences mRNA splice site selection and exon inclusion. Its phosphorylation by FYN inhibits

Target Details

its ability to regulate splice site selection. Induces an increased concentration-dependent incorporation of exon in CD44 pre-mRNA by direct binding to purine-rich exonic enhancer. May function as an adapter protein for Src kinases during mitosis. Binds both poly(A) and poly(U) homopolymers. Phosphorylation by PTK6 inhibits its RNA-binding ability (By similarity)
Aliases: SLM1, SLM-1, bA535F17.1

Molecular Weight:	39 kDa
-------------------	--------

Gene ID:	202559
----------	--------

HGNC:	202559
-------	--------

Application Details

Application Notes:	ELISA: 1:10000, WB: 1:500 - 1:2000, IHC: 1:200 - 1:1000, FCM: 1:200 - 1:400
--------------------	---

Restrictions:	For Research Use only
---------------	-----------------------

Handling

Format:	Liquid
---------	--------

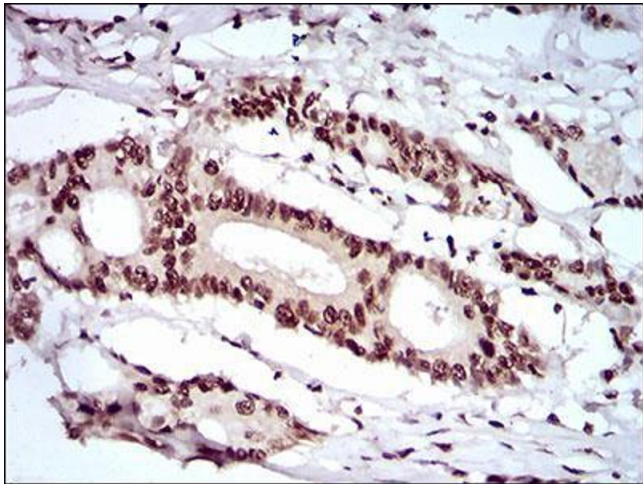
Buffer:	Purified antibody in PBS with 0.05 % sodium azide.
---------	--

Preservative:	Sodium azide
---------------	--------------

Precaution of Use:	This product contains Sodium azide: a POISONOUS AND HAZARDOUS SUBSTANCE which should be handled by trained staff only.
--------------------	--

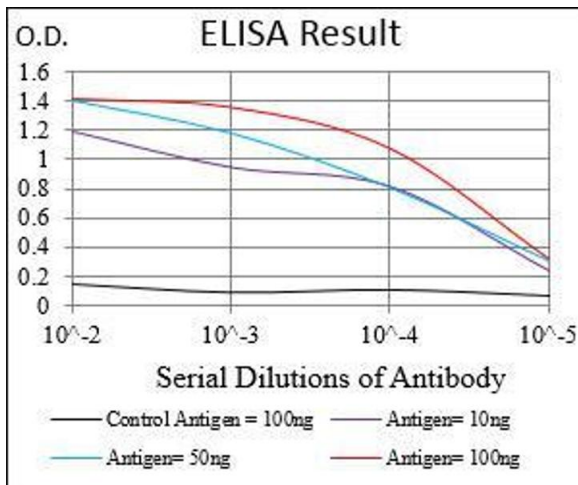
Storage:	4 °C/-20 °C
----------	-------------

Storage Comment:	4°C, -20°C for long term storage
------------------	----------------------------------



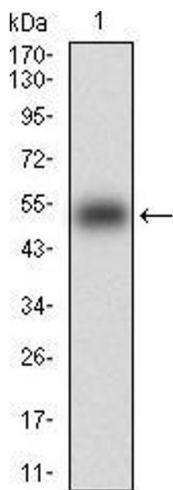
Immunohistochemistry

Image 1. Immunohistochemical analysis of paraffin-embedded colon cancer tissues using KHDRBS2 mouse mAb with DAB staining.



ELISA

Image 2. Black line: Control Antigen (100 ng), Purple line: Antigen(10 ng), Blue line: Antigen (50 ng), Red line: Antigen (100 ng),



Western Blotting

Image 3. Western blot analysis using KHDRBS2 mAb against human KHDRBS2 (AA: 160-349) recombinant protein. (Expected MW is 46.3 kDa)

Please check the [product details page](#) for more images. Overall 6 images are available for ABIN2682997.