

Datasheet for ABIN2682998
anti-Menin antibody (AA 392-554)



[Go to Product page](#)

5 Images

Overview

Quantity:	0.1 mg
Target:	Menin (MEN1)
Binding Specificity:	AA 392-554
Reactivity:	Human
Host:	Mouse
Clonality:	Monoclonal
Conjugate:	This Menin antibody is un-conjugated
Application:	Western Blotting (WB), ELISA, Immunohistochemistry (IHC), Flow Cytometry (FACS)

Product Details

Immunogen:	Purified recombinant fragment of human MEN1 (AA: 392-554) expressed in E. coli.
Clone:	7D3E10
Isotype:	IgG1
Purification:	purified

Target Details

Target:	Menin (MEN1)
Alternative Name:	MEN1 (MEN1 Products)
Background:	Description: This gene encodes menin, a putative tumor suppressor associated with a syndrome known as multiple endocrine neoplasia type 1. In vitro studies have shown menin is

Target Details

localized to the nucleus, possesses two functional nuclear localization signals, and inhibits transcriptional activation by JunD, however, the function of this protein is not known. Two messages have been detected on northern blots but the larger message has not been characterized. Alternative splicing results in multiple transcript variants.

Aliases: MEAI, SCG2

Molecular Weight: 68 kDa

Gene ID: 4221

HGNC: 4221

Pathways: [Chromatin Binding](#), [Positive Regulation of Endopeptidase Activity](#)

Application Details

Application Notes: ELISA: 1:10000, WB: 1:500 - 1:2000, IHC: 1:200 - 1:1000, FCM: 1:200 - 1:400

Restrictions: For Research Use only

Handling

Format: Liquid

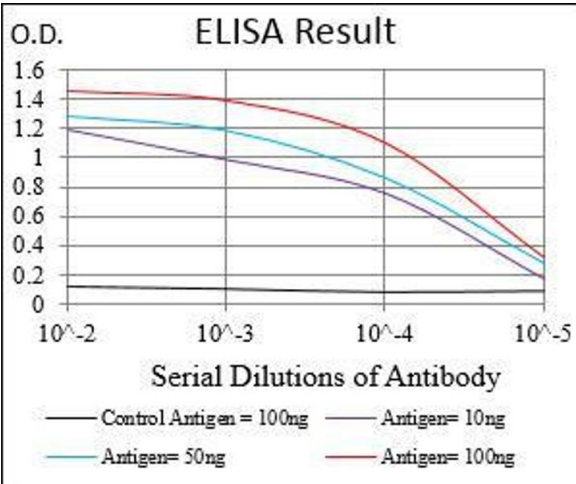
Buffer: Purified antibody in PBS with 0.05 % sodium azide.

Preservative: Sodium azide

Precaution of Use: This product contains Sodium azide: a POISONOUS AND HAZARDOUS SUBSTANCE which should be handled by trained staff only.

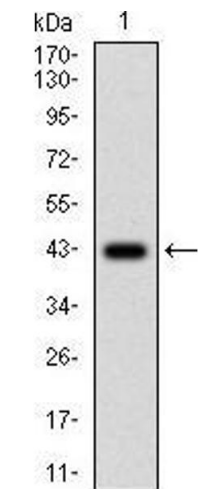
Storage: 4 °C/-20 °C

Storage Comment: 4°C, -20°C for long term storage



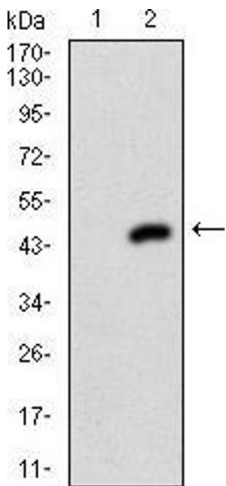
ELISA

Image 1. Black line: Control Antigen (100 ng), Purple line: Antigen(10 ng), Blue line: Antigen (50 ng), Red line: Antigen (100 ng),



Western Blotting

Image 2. Western blot analysis using MEN1 mAb against human MEN1 (AA: 392-554) recombinant protein. (Expected MW is 43.3 kDa)



Western Blotting

Image 3. Western blot analysis using MEN1 mAb against HEK293 (1) and MEN1 (AA: 392-554)-hlgGfc transfected HEK293 (2) cell lysate.

Please check the [product details page](#) for more images. Overall 5 images are available for ABIN2682998.