



[Go to Product page](#)

Datasheet for ABIN2683012
anti-ROR2 antibody (AA 59-155)

4 Images

Overview

Quantity:	0.1 mg
Target:	ROR2
Binding Specificity:	AA 59-155
Reactivity:	Human
Host:	Mouse
Clonality:	Monoclonal
Conjugate:	This ROR2 antibody is un-conjugated
Application:	Western Blotting (WB), ELISA, Flow Cytometry (FACS)

Product Details

Immunogen:	Purified recombinant fragment of human ROR2 (AA: 59-155) expressed in E. coli.
Clone:	6F2D10
Isotype:	IgG1
Purification:	purified

Target Details

Target:	ROR2
Alternative Name:	ROR2 (ROR2 Products)
Background:	Description: The protein encoded by this gene is a receptor protein tyrosine kinase and type I transmembrane protein that belongs to the ROR subfamily of cell surface receptors. The

Target Details

protein may be involved in the early formation of the chondrocytes and may be required for cartilage and growth plate development. Mutations in this gene can cause brachydactyly type B, a skeletal disorder characterized by hypoplasia/aplasia of distal phalanges and nails. In addition, mutations in this gene can cause the autosomal recessive form of Robinow syndrome, which is characterized by skeletal dysplasia with generalized limb bone shortening, segmental defects of the spine, brachydactyly, and a dysmorphic facial appearance. , ,
Aliases: BDB, BDB1, NTRKR2

Molecular Weight: 104.8 kDa

Gene ID: 4920

HGNC: 4920

Pathways: [RTK Signaling](#), [WNT Signaling](#)

Application Details

Application Notes: ELISA: 1:10000, WB: 1:500 - 1:2000, FCM: 1:200 - 1:400

Restrictions: For Research Use only

Handling

Format: Liquid

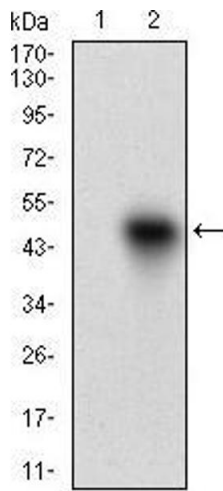
Buffer: Purified antibody in PBS with 0.05 % sodium azide.

Preservative: Sodium azide

Precaution of Use: This product contains Sodium azide: a POISONOUS AND HAZARDOUS SUBSTANCE which should be handled by trained staff only.

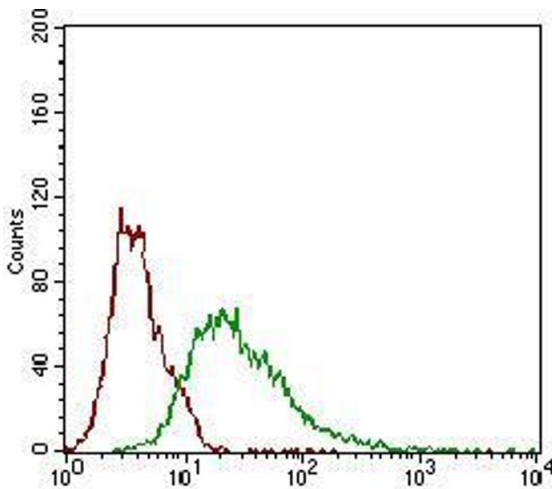
Storage: 4 °C/-20 °C

Storage Comment: 4°C, -20°C for long term storage



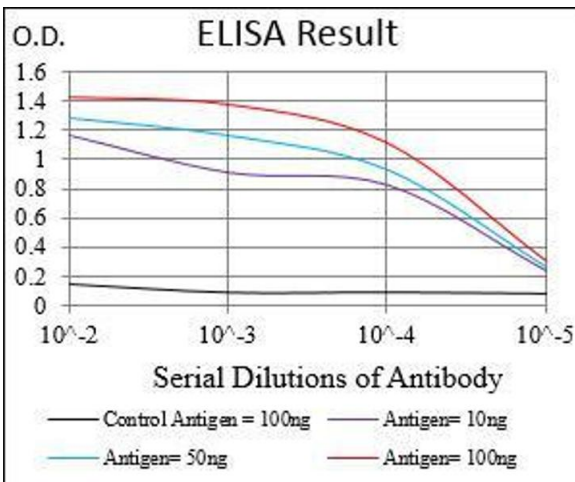
Western Blotting

Image 1. Western blot analysis using ROR2 mAb against HEK293 (1) and ROR2 (AA: 59-155)-hlgGFc transfected HEK293 (2) cell lysate.



Flow Cytometry

Image 2. Flow cytometric analysis of Hela cells using ROR2 mouse mAb (green) and negative control (red).



ELISA

Image 3. Black line: Control Antigen (100 ng), Purple line: Antigen(10 ng), Blue line: Antigen (50 ng), Red line: Antigen (100 ng),

Please check the [product details page](#) for more images. Overall 4 images are available for ABIN2683012.