

Datasheet for ABIN2683013
anti-SMCP antibody (full length)

4 Images

[Go to Product page](#)

Overview

Quantity:	0.1 mg
Target:	SMCP
Binding Specificity:	full length
Reactivity:	Human
Host:	Mouse
Clonality:	Monoclonal
Application:	ELISA, Western Blotting (WB), Immunocytochemistry (ICC)

Product Details

Immunogen:	Purified recombinant fragment of human SMCP (AA: FULL(1-116)) expressed in E. coli.
Clone:	5C10D8
Isotype:	IgG2b
Purification:	purified

Target Details

Target:	SMCP
Alternative Name:	SMCP (SMCP Products)
Background:	Description: Sperm mitochondria differ in morphology and subcellular localization from those of somatic cells. They are elongated, flattened, and arranged circumferentially to form a helical coiled sheath in the midpiece of the sperm flagellum. The protein encoded by this gene localizes to the capsule associated with the mitochondrial outer membranes and is thought to

Target Details

	function in the organization and stabilization of the helical structure of the sperm's mitochondrial sheath. Aliases: MCS, MCSP, HSMCSGEN1
Molecular Weight:	12.8 kDa
Gene ID:	4184
HGNC:	4184

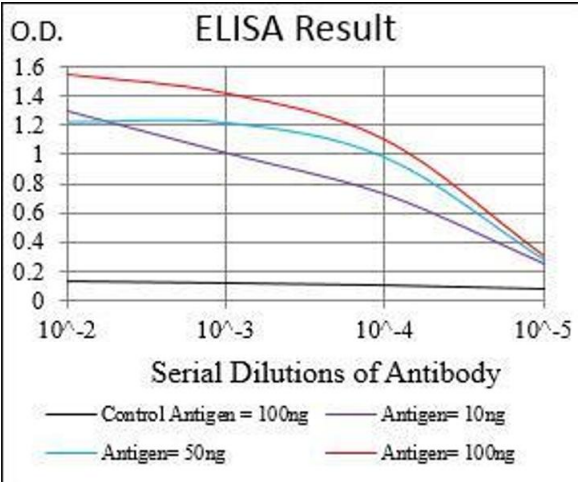
Application Details

Application Notes:	ELISA: 1:10000, WB: 1:500 - 1:2000, ICC: 1:200 - 1:1000
Restrictions:	For Research Use only

Handling

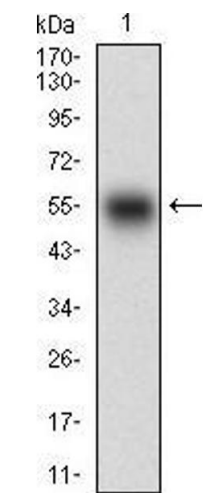
Format:	Liquid
Buffer:	Purified antibody in PBS with 0.05 % sodium azide.
Preservative:	Sodium azide
Precaution of Use:	This product contains Sodium azide: a POISONOUS AND HAZARDOUS SUBSTANCE which should be handled by trained staff only.
Storage:	4 °C/-20 °C
Storage Comment:	4°C, -20°C for long term storage

Images



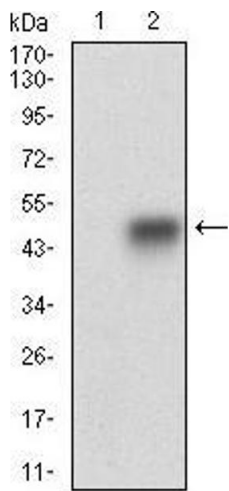
ELISA

Image 1. Black line: Control Antigen (100 ng), Purple line: Antigen(10 ng), Blue line: Antigen (50 ng), Red line: Antigen (100 ng),



Western Blotting

Image 2. Western blot analysis using SMCP mAb against human SMCP (AA: FULL(1-116)) recombinant protein. (Expected MW is 38.3 kDa)



Western Blotting

Image 3. Western blot analysis using SMCP mAb against HEK293 (1) and SMCP (AA: FULL(1-116))-hIgGFc transfected HEK293 (2) cell lysate.

Please check the [product details page](#) for more images. Overall 4 images are available for ABIN2683013.