

Datasheet for ABIN2683015
anti-TIE1 antibody (AA 385-607)



[Go to Product page](#)

6 Images

Overview

Quantity:	0.1 mg
Target:	TIE1
Binding Specificity:	AA 385-607
Reactivity:	Human
Host:	Mouse
Clonality:	Monoclonal
Conjugate:	This TIE1 antibody is un-conjugated
Application:	Western Blotting (WB), ELISA, Immunohistochemistry (IHC)

Product Details

Immunogen:	Purified recombinant fragment of human TIE1 (AA: 385-607) expressed in E. coli.
Clone:	8D12D2
Isotype:	IgG1
Purification:	purified

Target Details

Target:	TIE1
Alternative Name:	TIE1 (TIE1 Products)
Background:	Description: This gene encodes a member of the tyrosine protein kinase family. The encoded protein plays a critical role in angiogenesis and blood vessel stability by inhibiting angiotensin II

Target Details

signaling through the endothelial receptor tyrosine kinase Tie2. Ectodomain cleavage of the encoded protein relieves inhibition of Tie2 and is mediated by multiple factors including vascular endothelial growth factor. Alternatively spliced transcript variants encoding multiple isoforms have been observed for this gene. ,

Aliases: TIE, JTK14

Molecular Weight: 125 kDa

Gene ID: 7075

HGNC: 7075

Pathways: [RTK Signaling](#)

Application Details

Application Notes: ELISA: 1:10000, WB: 1:500 - 1:2000, IHC: 1:200 - 1:1000

Restrictions: For Research Use only

Handling

Format: Liquid

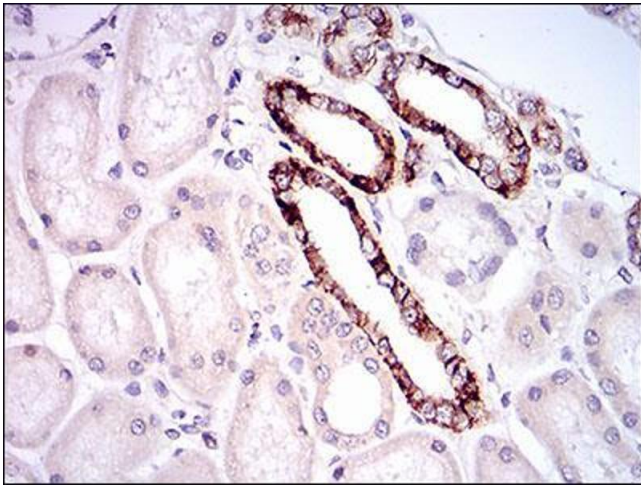
Buffer: Purified antibody in PBS with 0.05 % sodium azide.

Preservative: Sodium azide

Precaution of Use: This product contains Sodium azide: a POISONOUS AND HAZARDOUS SUBSTANCE which should be handled by trained staff only.

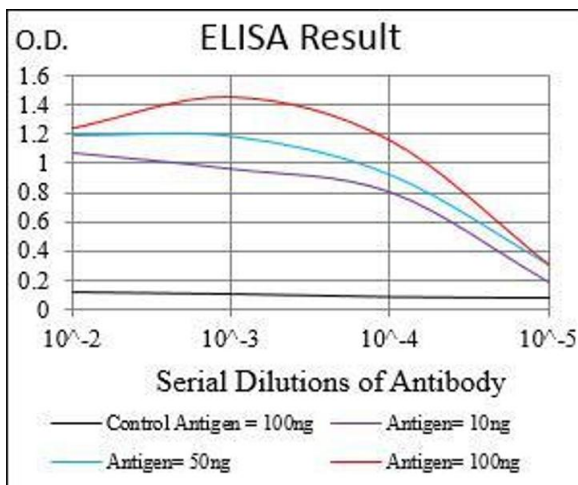
Storage: 4 °C/-20 °C

Storage Comment: 4°C, -20°C for long term storage



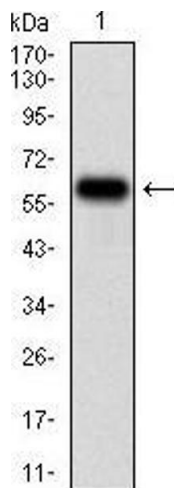
Immunohistochemistry

Image 1. Immunohistochemical analysis of paraffin-embedded kidney tissues using TIE1 mouse mAb with DAB staining.



ELISA

Image 2. Black line: Control Antigen (100 ng), Purple line: Antigen(10 ng), Blue line: Antigen (50 ng), Red line: Antigen (100 ng),



Western Blotting

Image 3. Western blot analysis using TIE1 mAb against human TIE1 (AA: 385-607) recombinant protein. (Expected MW is 50.6 kDa)

Please check the [product details page](#) for more images. Overall 6 images are available for ABIN2683015.