

Datasheet for ABIN2683016
anti-TIE1 antibody (AA 385-607)



[Go to Product page](#)

5 Images

Overview

Quantity:	100 µL
Target:	TIE1
Binding Specificity:	AA 385-607
Reactivity:	Human
Host:	Mouse
Clonality:	Monoclonal
Conjugate:	This TIE1 antibody is un-conjugated
Application:	Western Blotting (WB), ELISA, Immunohistochemistry (IHC)

Product Details

Purpose:	TIE1 Antibody
Immunogen:	Purified recombinant fragment of human TIE1 (AA: 385-607) expressed in E. Coli.
Clone:	8D12B10
Isotype:	IgG1
Purification:	Purified antibody

Target Details

Target:	TIE1
Alternative Name:	TIE1 (TIE1 Products)
Background:	Description: This gene encodes a member of the tyrosine protein kinase family. The encoded

Target Details

protein plays a critical role in angiogenesis and blood vessel stability by inhibiting angiopoietin 1 signaling through the endothelial receptor tyrosine kinase Tie2. Ectodomain cleavage of the encoded protein relieves inhibition of Tie2 and is mediated by multiple factors including vascular endothelial growth factor. Alternatively spliced transcript variants encoding multiple isoforms have been observed for this gene.

Aliases: TIE, JTK14

Molecular Weight: 125kDa

Gene ID: 7075

HGNC: 7075

UniProt: [P35590](#)

Pathways: [RTK Signaling](#)

Application Details

Application Notes: ELISA: 1/10000

Restrictions: For Research Use only

Handling

Format: Liquid

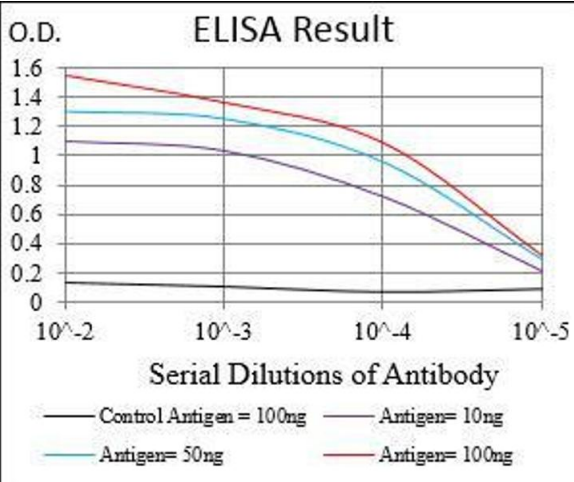
Buffer: Purified antibody in PBS with 0.05 % sodium azide.

Preservative: Sodium azide

Precaution of Use: This product contains Sodium azide: a POISONOUS AND HAZARDOUS SUBSTANCE which should be handled by trained staff only.

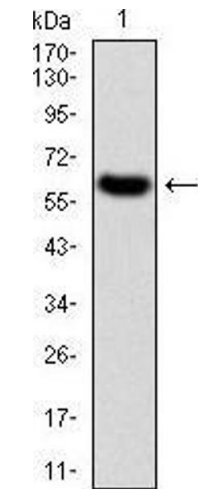
Storage: 4 °C,-20 °C

Storage Comment: Store at 4°C short term. Aliquot and store at -20°C long term. Avoid freeze/thaw cycles.



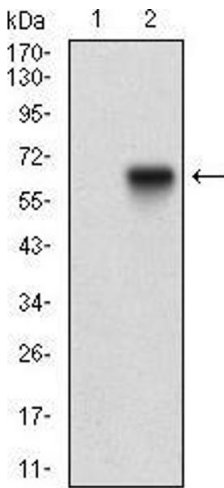
ELISA

Image 1. Black line: Control Antigen (100 ng), Purple line: Antigen(10 ng), Blue line: Antigen (50 ng), Red line: Antigen (100 ng),



Western Blotting

Image 2. Western blot analysis using TIE1 mAb against human TIE1 (AA: 385-607) recombinant protein. (Expected MW is 50.6 kDa)



Western Blotting

Image 3. Western blot analysis using TIE1 mAb against HEK293 (1) and TIE1 (AA: 385-607)-hlgGfC transfected HEK293 (2) cell lysate.

Please check the [product details page](#) for more images. Overall 5 images are available for ABIN2683016.