



Datasheet for ABIN2690017

anti-AIM2 antibody (AA 255-354) (PE)



[Go to Product page](#)

1 Image

Overview

Quantity:	100 µL
Target:	AIM2
Binding Specificity:	AA 255-354
Reactivity:	Human, Mouse, Rat
Host:	Rabbit
Clonality:	Polyclonal
Conjugate:	This AIM2 antibody is conjugated to PE
Application:	Western Blotting (WB), Flow Cytometry (FACS)

Product Details

Immunogen:	KLH conjugated synthetic peptide derived from mouse AIM2
Isotype:	IgG
Cross-Reactivity:	Human, Mouse, Rat
Purification:	Purified by Protein A.

Target Details

Target:	AIM2
Alternative Name:	AIM2 (AIM2 Products)
Background:	Synonyms: Gm1313, Ifi210, Interferon-inducible protein AIM2, Interferon-inducible protein 210, Ifi-210, Interferon-inducible protein p210, Aim2

Target Details

Background: Involved in innate immune response by recognizing cytosolic double-stranded DNA and inducing caspase-1-activating inflammasome formation in macrophages. Upon binding to DNA is thought to undergo oligomerization and to associate with PYCARD initiating the recruitment of caspase-1 precursor and processing of interleukin-1 beta and interleukin-18. Detects cytosolic dsDNA of viral and bacterial origin in a non-sequence-specific manner. Can also trigger PYCARD-dependent, caspase-1-independent cell death that involves caspase-8.

Gene ID: 383619

UniProt: [Q91VJ1](#)

Pathways: [Activation of Innate immune Response](#), [Positive Regulation of Endopeptidase Activity](#), [Inflammasome](#)

Application Details

Application Notes: FCM 1:20-100

Restrictions: For Research Use only

Handling

Format: Liquid

Concentration: 1 µg/µL

Buffer: Aqueous buffered solution containing 0.01M TBS (pH 7.4) with 1 % BSA, 0.03 % Proclin300 and 50 % Glycerol.

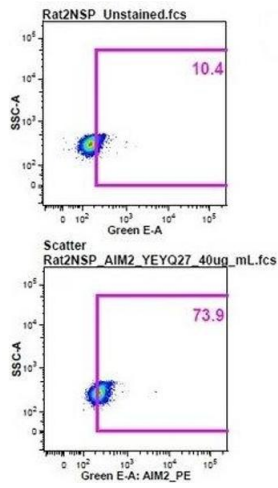
Preservative: ProClin

Precaution of Use: This product contains ProClin: a POISONOUS AND HAZARDOUS SUBSTANCE, which should be handled by trained staff only.

Storage: -20 °C

Storage Comment: Store at -20°C. Aliquot into multiple vials to avoid repeated freeze-thaw cycles.

Expiry Date: 12 months



Flow Cytometry

Image 1. Image was kindly submitted by a researcher at Duke University Medical Center. Rat splenocytes stained with Rabbit Anti-AIM2 Polyclonal Antibody, PE conjugated at 1:25.