



Datasheet for ABIN2690060  
**anti-CPSF4L antibody (AA 21-120)**



[Go to Product page](#)

2 Images

Overview

Quantity:	100 µL
Target:	CPSF4L
Binding Specificity:	AA 21-120
Reactivity:	Human
Host:	Rabbit
Clonality:	Polyclonal
Conjugate:	This CPSF4L antibody is un-conjugated
Application:	ELISA, Immunofluorescence (Cultured Cells) (IF (cc)), Immunofluorescence (Paraffin-embedded Sections) (IF (p)), Immunohistochemistry (Paraffin-embedded Sections) (IHC (p)), Immunohistochemistry (Frozen Sections) (IHC (fro)), Immunocytochemistry (ICC)

Product Details

Immunogen:	KLH conjugated synthetic peptide derived from human CPSF4L
Isotype:	IgG
Predicted Reactivity:	Human
Purification:	Purified by Protein A.

Target Details

Target:	CPSF4L
Alternative Name:	CPSF4L ( <a href="#">CPSF4L Products</a> )

## Target Details

---

Background:	Synonyms: Putative cleavage and polyadenylation specificity factor subunit 4-like protein, CPSF4L Background: Putative cleavage and polyadenylation specificity factor subunit 4-like protein.
Gene ID:	642843
UniProt:	<a href="#">A6NMK7</a>

## Application Details

---

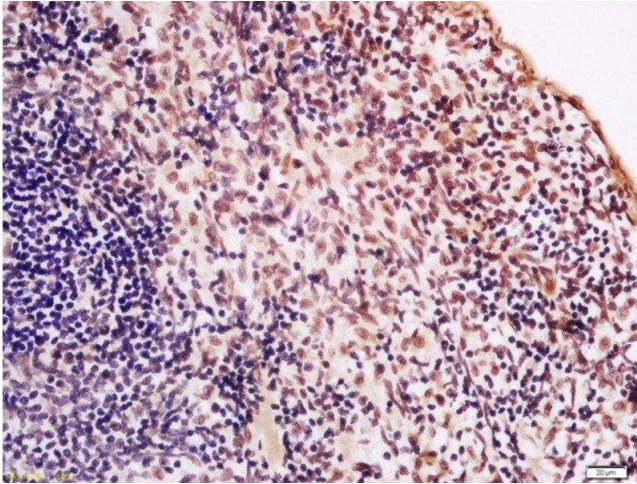
Application Notes:	ELISA 1:500-1000 IHC-P 1:200-400 IHC-F 1:100-500 IF(IHC-P) 1:50-200 IF(IHC-F) 1:50-200 IF(ICC) 1:50-200 ICC 1:100-500
--------------------	-----------------------------------------------------------------------------------------------------------------------------------------

Restrictions:	For Research Use only
---------------	-----------------------

## Handling

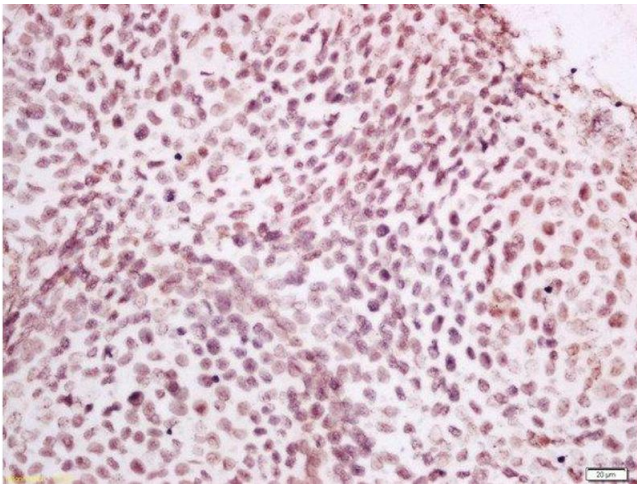
---

Format:	Liquid
Concentration:	1 µg/µL
Buffer:	0.01M TBS( pH 7.4) with 1 % BSA, 0.02 % Proclin300 and 50 % Glycerol.
Preservative:	ProClin
Precaution of Use:	This product contains ProClin: a POISONOUS AND HAZARDOUS SUBSTANCE, which should be handled by trained staff only.
Storage:	4 °C,-20 °C
Storage Comment:	Shipped at 4°C. Store at -20°C for one year. Avoid repeated freeze/thaw cycles.
Expiry Date:	12 months



#### Immunohistochemistry (Paraffin-embedded Sections)

**Image 1.** Formalin-fixed and paraffin embedded rat spleen labeled with Anti-CPSF4L Polyclonal Antibody, Unconjugated at 1:400 followed by conjugation to the secondary antibody and DAB staining.



#### Immunohistochemistry (Paraffin-embedded Sections)

**Image 2.** Formalin-fixed and paraffin embedded mouse embryo labeled with Anti-CPSF4L Polyclonal Antibody, Unconjugated at 1:400 followed by conjugation to the secondary antibody and DAB staining.