

Datasheet for ABIN2690062
anti-CT45A1 antibody (AA 21-120)[Go to Product page](#)

1 Image

Overview

Quantity:	100 µL
Target:	CT45A1
Binding Specificity:	AA 21-120
Reactivity:	Human
Host:	Rabbit
Clonality:	Polyclonal
Conjugate:	This CT45A1 antibody is un-conjugated
Application:	Western Blotting (WB), ELISA, Immunofluorescence (Cultured Cells) (IF (cc)), Immunofluorescence (Paraffin-embedded Sections) (IF (p)), Immunohistochemistry (Paraffin- embedded Sections) (IHC (p)), Immunohistochemistry (Frozen Sections) (IHC (fro)), Immunocytochemistry (ICC)

Product Details

Immunogen:	KLH conjugated synthetic peptide derived from human CT45A3
Isotype:	IgG
Specificity:	This antibody will detect all members of the near identical CT45A protein family.
Predicted Reactivity:	Human
Purification:	Purified by Protein A.

Target Details

Target:	CT45A1
---------	--------

Target Details

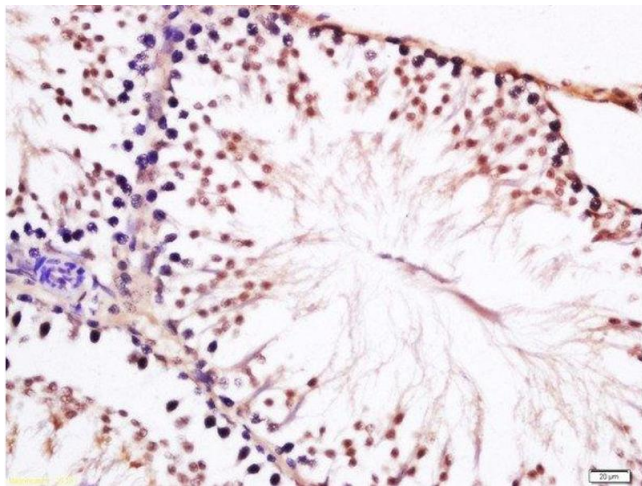
Alternative Name:	CT45A (CT45A1 Products)
Background:	Synonyms: CT45-3, CT45.3, Cancer/testis antigen family 45 member A3, Cancer/testis antigen 45-3, Cancer/testis antigen 45A3, CT45A3 Background: Cancer/testis antigen family 45 is testis specific and expressed in cancer cell lines.
Gene ID:	441519
UniProt:	Q8NHU0

Application Details

Application Notes:	WB 1:300-5000 ELISA 1:500-1000 IHC-P 1:200-400 IHC-F 1:100-500 IF(IHC-P) 1:50-200 IF(IHC-F) 1:50-200 IF(ICC) 1:50-200 ICC 1:100-500
Restrictions:	For Research Use only

Handling

Format:	Liquid
Concentration:	1 µg/µL
Buffer:	0.01M TBS(pH 7.4) with 1 % BSA, 0.02 % Proclin300 and 50 % Glycerol.
Preservative:	ProClin
Precaution of Use:	This product contains ProClin: a POISONOUS AND HAZARDOUS SUBSTANCE, which should be handled by trained staff only.
Storage:	4 °C,-20 °C
Storage Comment:	Shipped at 4°C. Store at -20°C for one year. Avoid repeated freeze/thaw cycles.
Expiry Date:	12 months



Immunohistochemistry (Paraffin-embedded Sections)

Image 1. Formalin-fixed and paraffin embedded rat testis labeled with Anti-CT45A Polyclonal Antibody, Unconjugated at 1:200 followed by conjugation to the secondary antibody and DAB staining