

Datasheet for ABIN2690105
anti-DOT1L antibody (AA 51-150)[Go to Product page](#)

1 Image

Overview

Quantity:	100 µL
Target:	DOT1L
Binding Specificity:	AA 51-150
Reactivity:	Human, Mouse, Rat, Green Monkey
Host:	Rabbit
Clonality:	Polyclonal
Conjugate:	This DOT1L antibody is un-conjugated
Application:	Western Blotting (WB), ELISA, Immunohistochemistry (Paraffin-embedded Sections) (IHC (p)), Immunofluorescence (Cultured Cells) (IF (cc)), Immunofluorescence (Paraffin-embedded Sections) (IF (p)), Immunohistochemistry (Frozen Sections) (IHC (fro)), Immunocytochemistry (ICC)

Product Details

Immunogen:	KLH conjugated synthetic peptide derived from human DOT1L
Isotype:	IgG
Cross-Reactivity:	Green Monkey, Human, Mouse, Rat
Predicted Reactivity:	Cow, Sheep
Purification:	Purified by Protein A.

Target Details

Target:	DOT1L
---------	-------

Target Details

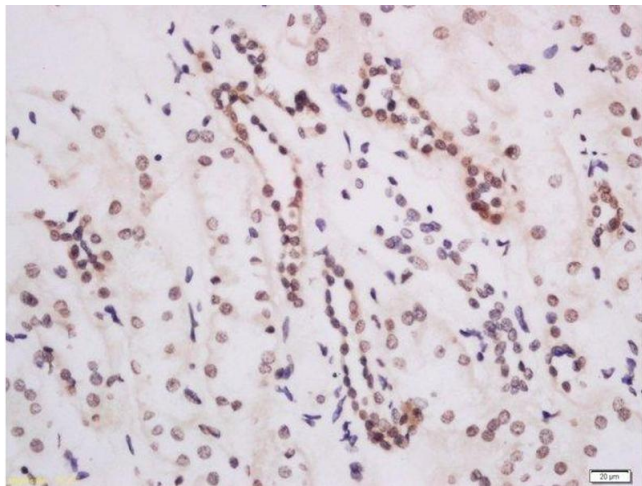
Alternative Name:	DOT1L (DOT1L Products)
Background:	<p>Synonyms: DOT1, KMT4, Histone-lysine N-methyltransferase, H3 lysine-79 specific, DOT1-like protein, Histone H3-K79 methyltransferase, H3-K79-HMTase, Lysine N-methyltransferase 4, DOT1L, KIAA1814</p> <p>Background: Histone methyltransferase. Methylates 'Lys-79' of histone H3. Nucleosomes are preferred as substrate compared to free histones. Binds to DNA.</p>
Gene ID:	84444
UniProt:	Q8TEK3

Application Details

Application Notes:	<p>WB 1:300-5000</p> <p>ELISA 1:500-1000</p> <p>IHC-P 1:200-400</p> <p>IHC-F 1:100-500</p> <p>IF(IHC-P) 1:50-200</p> <p>IF(IHC-F) 1:50-200</p> <p>IF(ICC) 1:50-200</p> <p>ICC 1:100-500</p>
Restrictions:	For Research Use only

Handling

Format:	Liquid
Concentration:	1 µg/µL
Buffer:	0.01M TBS(pH 7.4) with 1 % BSA, 0.02 % Proclin300 and 50 % Glycerol.
Preservative:	ProClin
Precaution of Use:	This product contains ProClin: a POISONOUS AND HAZARDOUS SUBSTANCE, which should be handled by trained staff only.
Storage:	4 °C,-20 °C
Storage Comment:	Shipped at 4°C. Store at -20°C for one year. Avoid repeated freeze/thaw cycles.
Expiry Date:	12 months



Immunohistochemistry (Paraffin-embedded Sections)

Image 1. Formalin-fixed and paraffin embedded human kidney labeled with Anti-DOT1L Polyclonal Antibody, Unconjugated at 1:200 followed by conjugation to the secondary antibody and DAB staining.