

Datasheet for ABIN2690207  
**anti-KCTD9 antibody (AA 21-120)**[Go to Product page](#)

## 1 Image

## Overview

Quantity:	100 µL
Target:	KCTD9
Binding Specificity:	AA 21-120
Reactivity:	Human
Host:	Rabbit
Clonality:	Polyclonal
Conjugate:	This KCTD9 antibody is un-conjugated
Application:	Western Blotting (WB), ELISA

## Product Details

Immunogen:	KLH conjugated synthetic peptide derived from human KCTD9
Isotype:	IgG
Cross-Reactivity:	Human
Predicted Reactivity:	Mouse,Rat,Dog,Horse,Rabbit
Purification:	Purified by Protein A.

## Target Details

Target:	KCTD9
Alternative Name:	KCTD9 ( <a href="#">KCTD9 Products</a> )
Background:	Synonyms: BTBD27, BTB/POZ domain-containing protein KCTD9, KCTD9

Target Details

	Background: protein homooligomerization
Gene ID:	54793
UniProt:	<a href="#">Q7L273</a>

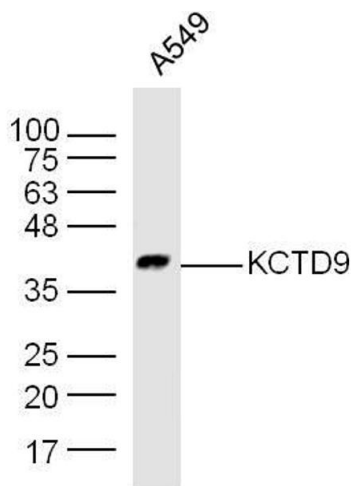
Application Details

Application Notes:	WB 1:300-5000 ELISA 1:500-1000
Restrictions:	For Research Use only

Handling

Format:	Liquid
Concentration:	1 µg/µL
Buffer:	0.01M TBS( pH 7.4) with 1 % BSA, 0.02 % Proclin300 and 50 % Glycerol.
Preservative:	ProClin
Precaution of Use:	This product contains ProClin: a POISONOUS AND HAZARDOUS SUBSTANCE, which should be handled by trained staff only.
Storage:	4 °C,-20 °C
Storage Comment:	Shipped at 4°C. Store at -20°C for one year. Avoid repeated freeze/thaw cycles.
Expiry Date:	12 months

Images



Western Blotting

**Image 1.** Human A549 cell lysates probed with Rabbit Anti-KCTD9 Polyclonal Antibody, Unconjugated at 1:300 overnight at 4°C. Followed by a conjugated secondary antibody -HRP) at 1:5000 for 90 min at 37°C.