



[Go to Product page](#)

Datasheet for ABIN2690209

## anti-pan Keratin antibody (AA 331-430)

### 4 Images

#### Overview

Quantity:	100 µL
Target:	pan Keratin (panKRT)
Binding Specificity:	AA 331-430
Reactivity:	Human, Rat
Host:	Rabbit
Clonality:	Polyclonal
Conjugate:	This pan Keratin antibody is un-conjugated
Application:	Immunohistochemistry (Paraffin-embedded Sections) (IHC (p)), Immunocytochemistry (ICC), Immunofluorescence (Cultured Cells) (IF (cc)), Immunofluorescence (Paraffin-embedded Sections) (IF (p)), Immunohistochemistry (Frozen Sections) (IHC (fro))

#### Product Details

Immunogen:	KLH conjugated synthetic peptide derived from human CK5
Isotype:	IgG
Specificity:	This will target: CK4, CK75, CK3, CK2, CK6C, CK6A, keratin 6E
Cross-Reactivity:	Human, Rat
Predicted Reactivity:	Mouse
Purification:	Purified by Protein A.

## Target Details

---

Target: pan Keratin (panKRT)

Alternative Name: Keratin ([panKRT Products](#))

Background: Synonyms: CK4, CK75, CK3, CK2, CK6C, CK6A, keratin 6E, P-CK  
Background: Cytokeratins (CK) are intermediate filaments of epithelial cells, both in keratinising tissue (ie., skin) and non keratinising cells (ie., mesothelial cells). Although not a traditional marker for endothelial cells, cytokeratins have also been found in some microvascular endothelial cells. At least 20 different cytokeratins (CK) in the molecular range of 40 to 70 kDa and isoelectric points of 5 to 8.5 can be identified using two dimensional gel electrophoresis. Biochemically, most members of the CK family fall into one of two classes, type I (acidic polypeptides) and type II (basic polypeptides). At least one member of the acidic family and one member of the basic family is expressed in all epithelial cells. Defects in KRT5 are a cause of epidermolysis bullosa simplex.

## Application Details

---

Application Notes: IHC-P 1:200-400  
IHC-F 1:100-500  
IF(IHC-P) 1:50-200  
IF(IHC-F) 1:50-200  
IF(ICC) 1:50-200  
ICC 1:100-500

Restrictions: For Research Use only

## Handling

---

Format: Liquid

Concentration: 1 µg/µL

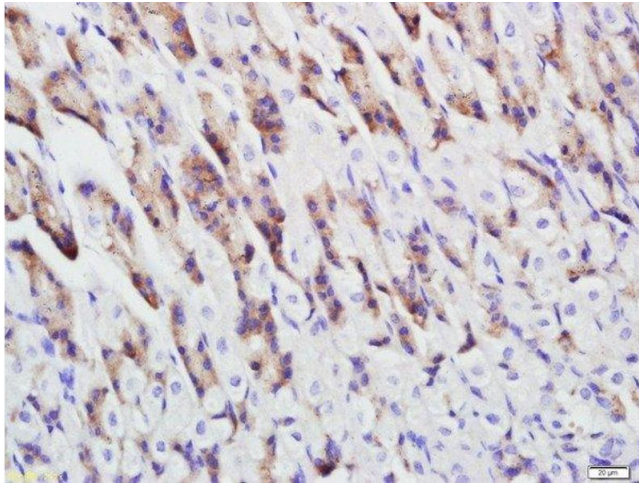
Buffer: 0.01M TBS( pH 7.4) with 1 % BSA, 0.02 % Proclin300 and 50 % Glycerol.

Preservative: ProClin

Precaution of Use: This product contains ProClin: a POISONOUS AND HAZARDOUS SUBSTANCE, which should be handled by trained staff only.

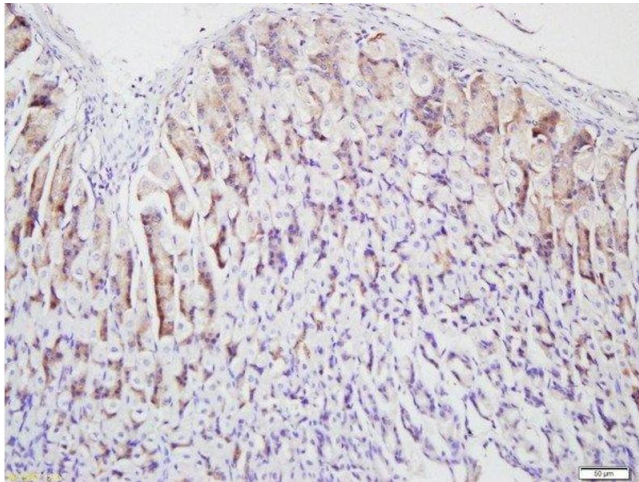
Storage: 4 °C,-20 °C

Storage Comment: Shipped at 4°C. Store at -20°C for one year. Avoid repeated freeze/thaw cycles.



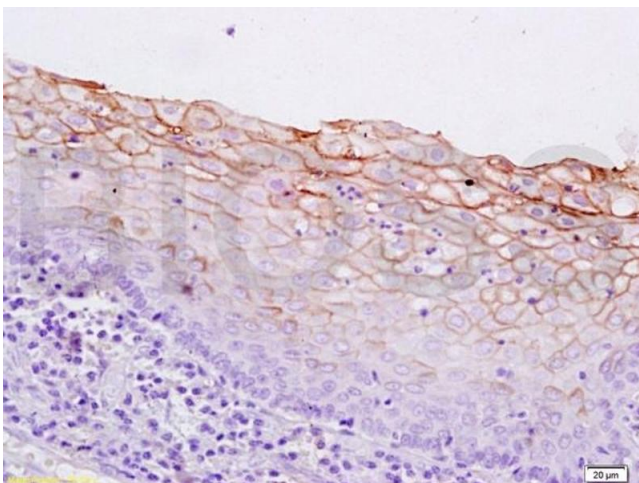
**Immunohistochemistry (Paraffin-embedded Sections)**

**Image 1.** Formalin-fixed and paraffin embedded rat stomach labeled with Anti-pan Cytokeratin Polyclonal Antibody, Unconjugated at 1:500 followed by conjugation to the secondary antibody and DAB staining.



**Immunohistochemistry (Paraffin-embedded Sections)**

**Image 2.** Formalin-fixed and paraffin embedded rat stomach labeled with Anti-pan Cytokeratin Polyclonal Antibody, Unconjugated at 1:500 followed by conjugation to the secondary antibody and DAB staining.



**Immunohistochemistry (Paraffin-embedded Sections)**

**Image 3.** Formalin-fixed and paraffin embedded human breast carcinoma labeled with Anti-pan Cytokeratin Polyclonal Antibody, Unconjugated at 1:200 followed by conjugation to the secondary antibody and DAB staining.

Please check the [product details page](#) for more images. Overall 4 images are available for ABIN2690209.