

Datasheet for ABIN2690233

**anti-LUC7-Like 3 antibody (AA 31-130)**[Go to Product page](#)**1** Image

## Overview

Quantity:	100 µL
Target:	LUC7-Like 3 (LUC7L3)
Binding Specificity:	AA 31-130
Reactivity:	Mouse, Rat
Host:	Rabbit
Clonality:	Polyclonal
Conjugate:	This LUC7-Like 3 antibody is un-conjugated
Application:	Western Blotting (WB), Immunofluorescence (Cultured Cells) (IF (cc)), Immunofluorescence (Paraffin-embedded Sections) (IF (p)), ELISA, Immunohistochemistry (Paraffin-embedded Sections) (IHC (p)), Immunocytochemistry (ICC), Immunohistochemistry (Frozen Sections) (IHC (fro))

## Product Details

Immunogen:	KLH conjugated synthetic peptide derived from human LUC7L3
Isotype:	IgG
Cross-Reactivity:	Mouse, Rat
Predicted Reactivity:	Human,Cow,Sheep,Pig,Chicken
Purification:	Purified by Protein A.

## Target Details

Target:	LUC7-Like 3 (LUC7L3)
---------	----------------------

## Target Details

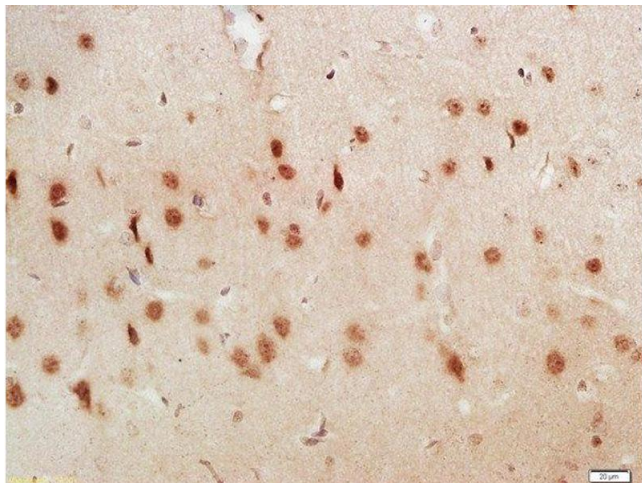
Alternative Name:	LUC7L3 ( <a href="#">LUC7L3 Products</a> )
Background:	Synonyms: CRA, CROP, LUC7A, hLuc7A, CREAP-1, OA48-18, Luc7-like protein 3, Cisplatin resistance-associated-overexpressed protein, Okadaic acid-inducible phosphoprotein OA48-18, cAMP regulatory element-associated protein 1, CRE-associated protein 1, LUC7L3, CREAP1, O48  Background: Binds cAMP regulatory element DNA sequence. May play a role in RNA splicing.
Gene ID:	51747
UniProt:	<a href="#">O95232</a>
Pathways:	<a href="#">Ribonucleoprotein Complex Subunit Organization</a>

## Application Details

Application Notes:	WB 1:300-5000 ELISA 1:500-1000 IHC-P 1:200-400 IHC-F 1:100-500 IF(IHC-P) 1:50-200 IF(IHC-F) 1:50-200 IF(ICC) 1:50-200 ICC 1:100-500
Restrictions:	For Research Use only

## Handling

Format:	Liquid
Concentration:	1 µg/µL
Buffer:	0.01M TBS( pH 7.4) with 1 % BSA, 0.02 % Proclin300 and 50 % Glycerol.
Preservative:	ProClin
Precaution of Use:	This product contains ProClin: a POISONOUS AND HAZARDOUS SUBSTANCE, which should be handled by trained staff only.
Storage:	4 °C,-20 °C
Storage Comment:	Shipped at 4°C. Store at -20°C for one year. Avoid repeated freeze/thaw cycles.
Expiry Date:	12 months



#### Immunohistochemistry (Paraffin-embedded Sections)

**Image 1.** Formalin-fixed and paraffin embedded rat brain labeled with Anti-LUC7L3 Polyclonal Antibody, Unconjugated at 1:200 followed by conjugation to the secondary antibody and DAB staining