

Datasheet for ABIN2690282  
**anti-SRR antibody (AA 1-100)**[Go to Product page](#)

## 3 Images

## Overview

Quantity:	100 µL
Target:	SRR
Binding Specificity:	AA 1-100
Reactivity:	Human, Rat, Mouse
Host:	Rabbit
Clonality:	Polyclonal
Conjugate:	This SRR antibody is un-conjugated
Application:	Western Blotting (WB), ELISA, Immunofluorescence (Cultured Cells) (IF (cc)), Immunofluorescence (Paraffin-embedded Sections) (IF (p)), Immunohistochemistry (Paraffin- embedded Sections) (IHC (p)), Immunohistochemistry (Frozen Sections) (IHC (fro)), Immunocytochemistry (ICC)

## Product Details

Immunogen:	KLH conjugated synthetic peptide derived from human Serine Racemase
Isotype:	IgG
Cross-Reactivity:	Human, Mouse, Rat
Predicted Reactivity:	Dog,Cow,Sheep,Rabbit
Purification:	Purified by Protein A.

## Target Details

Target:	SRR
---------	-----

Target Details

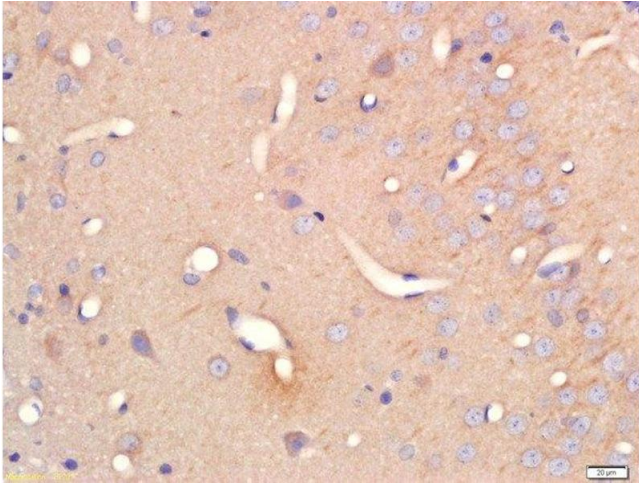
Alternative Name:	Serine Racemase ( <a href="#">SRR Products</a> )
Background:	<p>Synonyms: ILV1, ISO1, Serine racemase, D-serine ammonia-lyase, D-serine dehydratase, L-serine ammonia-lyase, L-serine dehydratase, SRR</p> <p>Background: Catalyzes the synthesis of D-serine from L-serine. D-serine is a key coagonist with glutamate at NMDA receptors. Has dehydratase activity towards both L-serine and D-serine.</p>
Gene ID:	63826
UniProt:	<a href="#">Q9GZT4</a>

Application Details

Application Notes:	<p>WB 1:300-5000</p> <p>ELISA 1:500-1000</p> <p>IHC-P 1:200-400</p> <p>IHC-F 1:100-500</p> <p>IF(IHC-P) 1:50-200</p> <p>IF(IHC-F) 1:50-200</p> <p>IF(ICC) 1:50-200</p> <p>ICC 1:100-500</p>
Restrictions:	For Research Use only

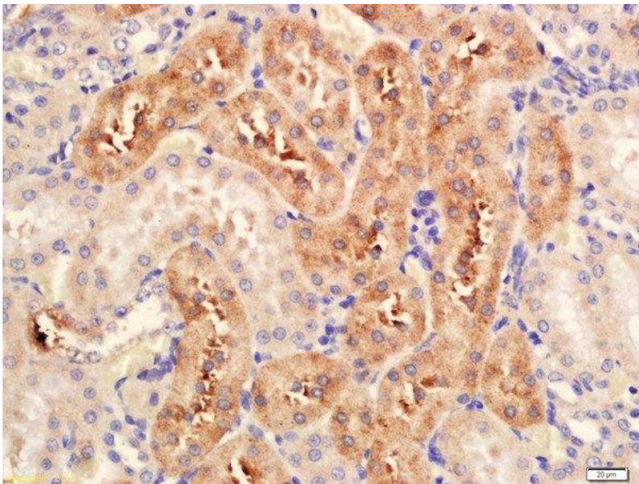
Handling

Format:	Liquid
Concentration:	1 µg/µL
Buffer:	0.01M TBS( pH 7.4) with 1 % BSA, 0.02 % Proclin300 and 50 % Glycerol.
Preservative:	ProClin
Precaution of Use:	This product contains ProClin: a POISONOUS AND HAZARDOUS SUBSTANCE, which should be handled by trained staff only.
Storage:	4 °C,-20 °C
Storage Comment:	Shipped at 4°C. Store at -20°C for one year. Avoid repeated freeze/thaw cycles.
Expiry Date:	12 months



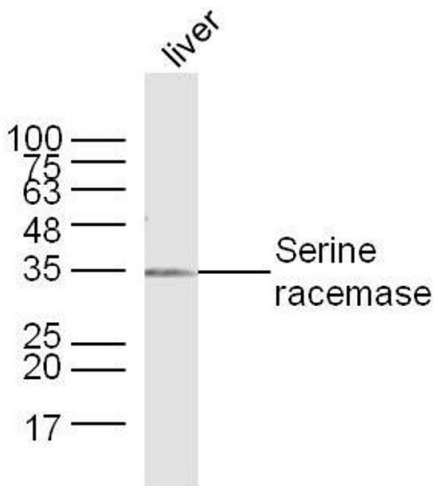
#### Immunohistochemistry (Paraffin-embedded Sections)

**Image 1.** Formalin-fixed and paraffin embedded rat brain labeled with Anti-Serine Racemase Polyclonal Antibody, Unconjugated at 1:200 followed by conjugation to the secondary antibody and DAB staining



#### Immunohistochemistry (Paraffin-embedded Sections)

**Image 2.** Formalin-fixed and paraffin embedded rat kidney labeled with Anti-Serine Racemase Polyclonal Antibody, Unconjugated at 1:200 followed by conjugation to the secondary antibody and DAB staining.



#### Western Blotting

**Image 3.** Mouse Liver lysates probed with Serine racemase Polyclonal Antibody, Unconjugated at 1:300 dilution and 4°C overnight incubation. Followed by conjugated secondary antibody incubation at 1:10000 for 60 min at 37°C.