

Datasheet for ABIN2690500
anti-Cytohesin 3 antibody

3 Images

[Go to Product page](#)

Overview

| | |
|--------------|---|
| Quantity: | 50 µg |
| Target: | Cytohesin 3 (CYTH3) |
| Reactivity: | Mouse, Rat |
| Host: | Rabbit |
| Clonality: | Polyclonal |
| Conjugate: | This Cytohesin 3 antibody is un-conjugated |
| Application: | Western Blotting (WB), Immunocytochemistry (ICC), Immunoprecipitation (IP), Immunohistochemistry (IHC) |

Product Details

| | |
|---------------|-------------------|
| Purification: | affinity purified |
|---------------|-------------------|

Target Details

| | |
|-------------------|--|
| Target: | Cytohesin 3 (CYTH3) |
| Alternative Name: | Cytohesin 3 (CYTH3 Products) |

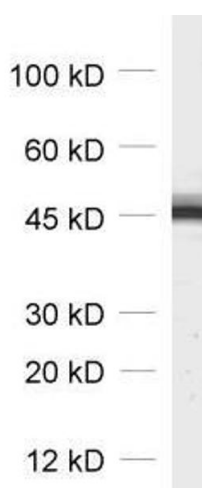
Application Details

| | |
|--------------------|--|
| Application Notes: | Optimal working dilution should be determined by the investigator. |
| Restrictions: | For Research Use only |

Handling

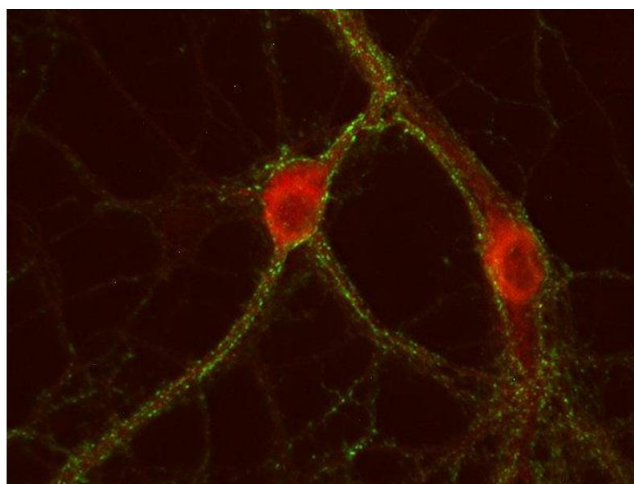
| | |
|------------------|---|
| Format: | Lyophilized |
| Reconstitution: | For reconstitution add 200 µL H ₂ O, then aliquot and store at -20 °C until use. |
| Buffer: | PBS |
| Handling Advice: | Affinity purified antibodies are less robust than antisera, since protease inhibitors are also removed during purification. Hence, storage at 4 °C for prolonged periods (i.e. several weeks), is not recommended. |
| Storage: | -20 °C |
| Storage Comment: | Unlabeled lyophilized antibodies are stable in this form without loss of quality at ambient temperatures for several weeks or even months. They can be stored at 4°C for several years. Lyophilized antibodies must not be stored in the freezer, they may be destroyed! |

Images



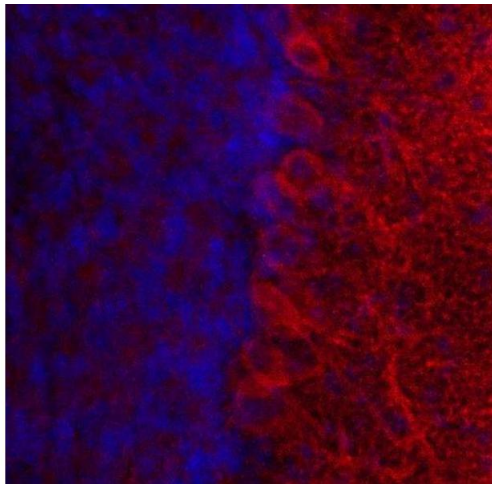
Western Blotting

Image 1. dilution: 1 : 1000, sample: synaptosomal fraction (P2) of rat brain



Immunocytochemistry

Image 2. Indirect immunostaining of PFA fixed rat hippocampus neurons with anti-cytohesin 3 (dilution 1 : 500; red) and mouse anti-synapsin 1 (cat. no. 106 001, dilution 1 : 500; green).



Immunohistochemistry

Image 3. Indirect immunostaining of PFA fixed mouse cerebellum section with anti-cytohesin 3 (dilution 1 : 500; red). Nuclei have been visualized by DAPI staining.