

Datasheet for ABIN2690504

anti-EPS8 antibody**3** Images[Go to Product page](#)

Overview

Quantity:	50 µg
Target:	EPS8
Reactivity:	Rat, Mouse
Host:	Rabbit
Clonality:	Polyclonal
Conjugate:	This EPS8 antibody is un-conjugated
Application:	Western Blotting (WB), Immunohistochemistry (IHC), Immunoprecipitation (IP), Immunocytochemistry (ICC)

Product Details

Purification:	affinity purified
---------------	-------------------

Target Details

Target:	EPS8
Alternative Name:	EPS 8 (EPS8 Products)
Pathways:	EGFR Signaling Pathway , Regulation of Actin Filament Polymerization

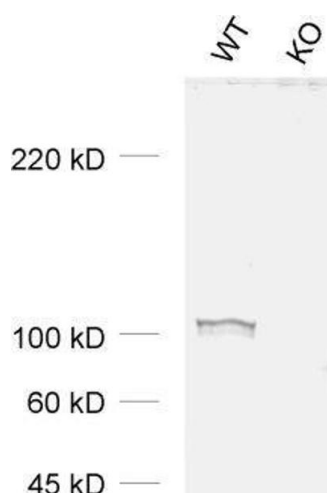
Application Details

Application Notes:	Optimal working dilution should be determined by the investigator.
Restrictions:	For Research Use only

Handling

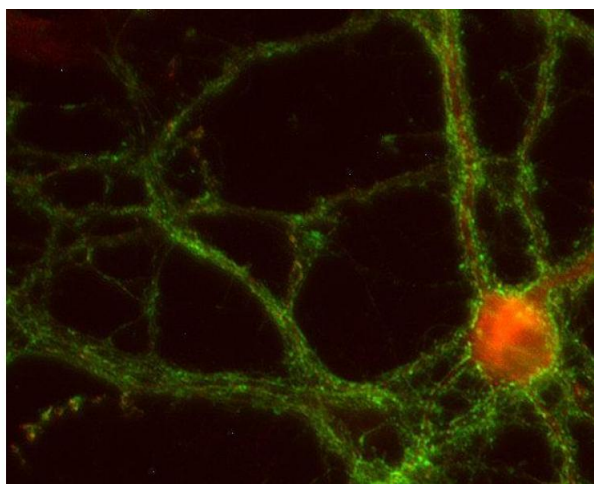
Format:	Lyophilized
Reconstitution:	For reconstitution add 200 µL H ₂ O, then aliquot and store at -20 °C until use.
Buffer:	PBS
Handling Advice:	Affinity purified antibodies are less robust than antisera, since protease inhibitors are also removed during purification. Hence, storage at 4 °C for prolonged periods (i.e. several weeks), is not recommended.
Storage:	-20 °C
Storage Comment:	Unlabeled lyophilized antibodies are stable in this form without loss of quality at ambient temperatures for several weeks or even months. They can be stored at 4°C for several years. Lyophilized antibodies must not be stored in the freezer, they may be destroyed!

Images



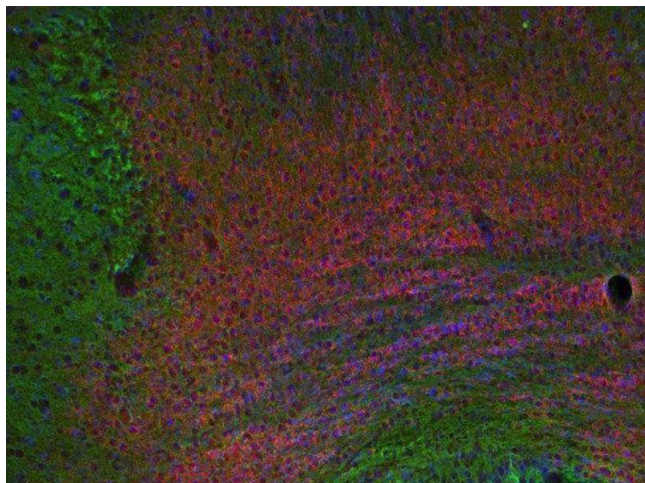
Western Blotting

Image 1. dilution: 1 : 1000, sample: WT and KO samples of mouse cortex



Immunocytochemistry

Image 2. Indirect immunostaining of PFA fixed rat hippocampus neurons with anti-EPS 8 (dilution 1 : 500; red) and mouse anti-synaptotagmin 1 (cat. no. 105 011, dilution 1 : 500; green).



Immunohistochemistry

Image 3. Indirect immunostaining of PFA fixed section of triangular nucleus of septum with anti-EPS 8 (dilution 1 : 200; red) and mouse anti- α -tubulin (cat. no. 302 211, dilution 1 : 200; green). Nuclei have been visualized by DAPI staining.