

Datasheet for ABIN2690506

**anti-SLC6A1 antibody**

## 4 Images

[Go to Product page](#)

## Overview

Quantity:	100 µL
Target:	SLC6A1 (GAT1)
Reactivity:	Rat, Mouse
Host:	Guinea Pig
Clonality:	Polyclonal
Conjugate:	This SLC6A1 antibody is un-conjugated
Application:	Western Blotting (WB), Immunohistochemistry (IHC), Immunocytochemistry (ICC), Immunoprecipitation (IP)

## Product Details

Purification:	antiserum
---------------	-----------

## Target Details

Target:	SLC6A1 (GAT1)
Alternative Name:	GABA Transporter 1 ( <a href="#">GAT1 Products</a> )
Background:	Synonyms: GAT 1, Gabt1, Slc6a1

## Application Details

Application Notes:	Optimal working dilution should be determined by the investigator.
Restrictions:	For Research Use only

## Handling

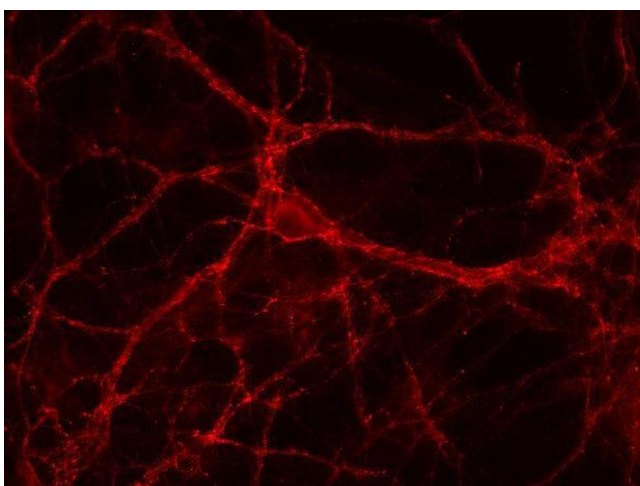
Format:	Liquid
Buffer:	PBS
Handling Advice:	<p>Crude antisera are more robust than monoclonals. With anti-microbials added, they may be stored at 4 °C.</p> <p>Serum does not contain active proteases, in fact, serum itself contains a powerful cocktail of protease inhibitors. Frozen storage (-20 °C), however, is preferable.</p>
Storage:	4 °C/-20 °C
Storage Comment:	Unlabeled antibodies are stable in this form without loss of quality at ambient temperatures for several weeks or even months. They can be stored at 4 °C for several years.

## Images



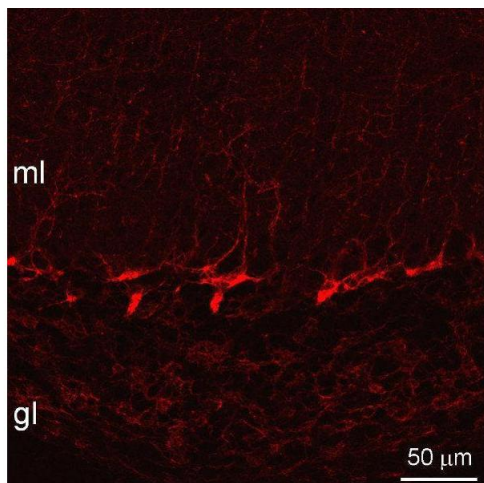
### Western Blotting

**Image 1.** dilution: 1 : 1000, sample: synaptic membrane fraction (LP1) of rat brain



### Immunocytochemistry

**Image 2.** Indirect immunostaining of PFA fixed rat hippocampus neurons (dilution 1 : 500).



#### Immunohistochemistry

**Image 3.** Indirect immunostaining of pepsin treated mouse cerebellum sections (dilution 1 : 500).

Please check the [product details page](#) for more images. Overall 4 images are available for ABIN2690506.