

Datasheet for ABIN2690507

anti-SLC6A11 antibody

4 Images

[Go to Product page](#)

Overview

Quantity:	100 µL
Target:	SLC6A11
Reactivity:	Rat, Mouse
Host:	Guinea Pig
Clonality:	Polyclonal
Application:	Western Blotting (WB), Immunohistochemistry (IHC), Immunocytochemistry (ICC), Immunoprecipitation (IP)

Product Details

Purification:	antiserum
---------------	-----------

Target Details

Target:	SLC6A11
Alternative Name:	GABA Transporter 3 (SLC6A11 Products)
Background:	Synonyms: GAT 3, Gabt3, Slc6a11

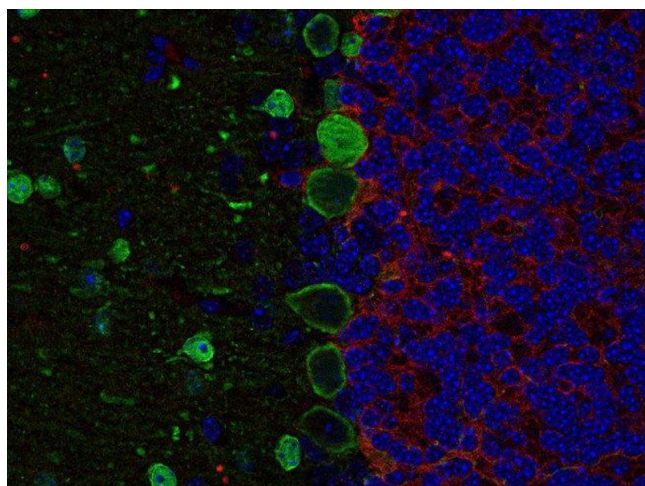
Application Details

Application Notes:	Optimal working dilution should be determined by the investigator.
Restrictions:	For Research Use only

Handling

Format:	Liquid
Buffer:	PBS
Handling Advice:	<p>Crude antisera are more robust than monoclonals. With anti-microbials added, they may be stored at 4 °C.</p> <p>Serum does not contain active proteases, in fact, serum itself contains a powerful cocktail of protease inhibitors. Frozen storage (-20 °C), however, is preferable.</p>
Storage:	4 °C/-20 °C
Storage Comment:	Unlabeled antibodies are stable in this form without loss of quality at ambient temperatures for several weeks or even months. They can be stored at 4 °C for several years.

Images



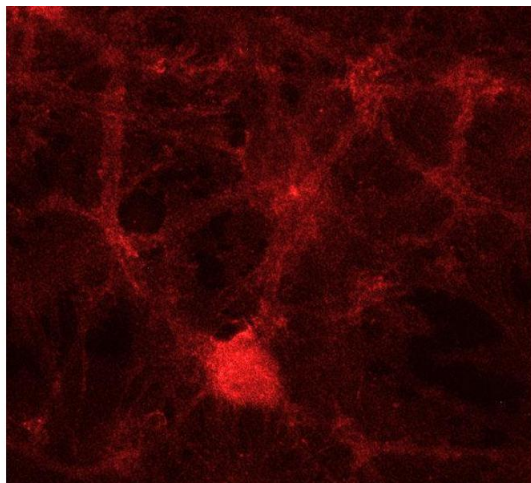
Immunohistochemistry (Paraffin-embedded Sections)

Image 1. Indirect immunolabeling of PFA fixed, paraffin embedded mouse cerebellum with guinea pig anti-GAT 3 (dilution 1 : 500; red) and chicken anti-parvalbumin (cat. no. 195 006, dilution 1 : 500; green). Nuclei have been visualized by DAPI staining (blue).



Western Blotting

Image 2. dilution: 1 : 1000, sample: synaptic membrane fraction (LP1) of rat brain



Immunocytochemistry

Image 3. Indirect immunostaining of PFA fixed rat hippocampus neurons (dilution 1 : 500).

Please check the [product details page](#) for more images. Overall 4 images are available for ABIN2690507.