

Datasheet for ABIN2703283

Kallikrein 6 ELISA Kit[Go to Product page](#)[1 Image](#)[1 Publication](#)

Overview

Quantity:	96 tests
Target:	Kallikrein 6 (KLK6)
Reactivity:	Human
Method Type:	Sandwich ELISA
Detection Range:	0.6-150 ng/mL
Minimum Detection Limit:	0.6 ng/mL
Application:	ELISA

Product Details

Purpose:	Human Kallikrein 6 ELISA Kit for cell culture supernatants, plasma, and serum samples.
Sample Type:	Plasma, Cell Culture Supernatant, Serum
Analytical Method:	Quantitative
Detection Method:	Colorimetric
Specificity:	This ELISA antibody pair detects human KLK6. Other species not determined.
Sensitivity:	0.6 ng/mL
Characteristics:	<ul style="list-style-type: none">• Strip plates and additional reagents allow for use in multiple experiments• Quantitative protein detection• Establishes normal range• The best products for confirmation of antibody array data
Components:	<ul style="list-style-type: none">• Pre-Coated 96-well Strip Microplate

Product Details

- Wash Buffer
- Stop Solution
- Assay Diluent(s)
- Lyophilized Standard
- Biotinylated Detection Antibody
- Streptavidin-Conjugated HRP
- TMB One-Step Substrate

Material not included:

- Distilled or deionized water
- Precision pipettes to deliver 2 µL to 1 µL volumes
- Adjustable 1-25 µL pipettes for reagent preparation
- 100 µL and 1 liter graduated cylinders
- Tubes to prepare standard and sample dilutions
- Absorbent paper
- Microplate reader capable of measuring absorbance at 450nm
- Log-log graph paper or computer and software for ELISA data analysis

Target Details

Target: Kallikrein 6 (KLK6)

Alternative Name: [KLK6 \(KLK6 Products\)](#)

Background: Gene Names: KLK6 PRSS18 PRSS9
Protein names: Kallikrein-6 (EC 3.4.21.-) (Neurosin) (Protease M) (SP59) (Serine protease 18) (Serine protease 9) (Zyme)

Gene ID: 5653

UniProt: [Q92876](#)

Pathways: [Complement System, Regulation of G-Protein Coupled Receptor Protein Signaling](#)

Application Details

Application Notes: Recommended Dilution for serum and plasma samples 2 fold

Sample Volume: 100 µL

Plate: Pre-coated

Protocol:

1. Prepare all reagents, samples and standards as instructed in the manual.
2. Add 100 µL of standard or sample to each well.
3. Incubate 2.5 h at RT or O/N at 4 °C.
4. Add 100 µL of prepared biotin antibody to each well.

Application Details

5. Incubate 1 h at RT.
6. Add 100 μ L of prepared Streptavidin solution to each well.
7. Incubate 45 min at RT.
8. Add 100 μ L of TMB One-Step Substrate Reagent to each well.
9. Incubate 30 min at RT.
10. Add 50 μ L of Stop Solution to each well.
11. Read at 450 nm immediately.

Restrictions: For Research Use only

Handling

Storage: -20 °C

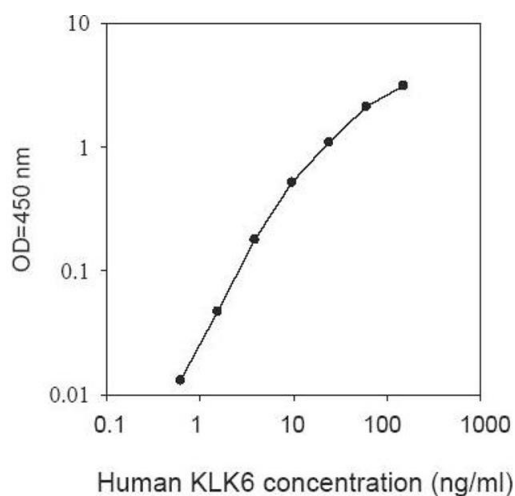
Storage Comment: The entire kit may be stored at -20°C for up to 1 year from the date of shipment. Avoid repeated freeze-thaw cycles. The kit may be stored at 4°C for up to 6 months. For extended storage, it is recommended to store at -80°C.

Expiry Date: 6 months

Publications

Product cited in: Ehrenfeld, Manso, Pavicic, Matus, Borquez, Lizama, Sarmiento, Poblete, Bhoola, Naran, Figueroa : "Bioregulation of kallikrein-related peptidases 6, 10 and 11 by the kinin B κ receptor in breast cancer cells." in: **Anticancer research**, Vol. 34, Issue 12, pp. 6925-38, (2015) ([PubMed](#)).

Images



ELISA

Image 1.