

Datasheet for ABIN2703427

PRSS8 ELISA Kit[Go to Product page](#)**1** Image

Overview

Quantity:	96 tests
Target:	PRSS8
Reactivity:	Human
Method Type:	Sandwich ELISA
Detection Range:	30-8000 pg/mL
Minimum Detection Limit:	30 pg/mL
Application:	ELISA

Product Details

Purpose:	Human Prostatin ELISA Kit for cell culture supernatants, plasma, and serum samples.
Sample Type:	Plasma, Cell Culture Supernatant, Serum
Analytical Method:	Quantitative
Detection Method:	Colorimetric
Specificity:	This ELISA kit shows no cross-reactivity with the following cytokines tested: human ANGPTL3, beta IG-H3, CA9, Cathepsin B, CD23, CHI3L1, CTLA-4, DKK-4, DPPIV, EDA-A2, Erythropoietin R, FGF-6, FGF-9, Gas 1, GITR, IGFBP-5, IL-1 F5, IL-1 F6, IL-1 F7, IL-1 F8, IL-1 F9, IL-1 F10, IL-1 R5, IL-21, IL-18, IL-20, IL-34, IL-5 R alpha, IL-10 R alpha, Layilin, Leptin R, Marapsin, Mer, MMP-7, P-Cadherin, PSMA, SIGIRR, TGF beta R3, Coagulation Factor III, TWEAK.
Sensitivity:	30 pg/mL
Characteristics:	<ul style="list-style-type: none">• Strip plates and additional reagents allow for use in multiple experiments

Product Details

- Quantitative protein detection
- Establishes normal range
- The best products for confirmation of antibody array data

- Components:
- Pre-Coated 96-well Strip Microplate
 - Wash Buffer
 - Stop Solution
 - Assay Diluent(s)
 - Lyophilized Standard
 - Biotinylated Detection Antibody
 - Streptavidin-Conjugated HRP
 - TMB One-Step Substrate

- Material not included:
- Distilled or deionized water
 - Precision pipettes to deliver 2 µL to 1 µL volumes
 - Adjustable 1-25 µL pipettes for reagent preparation
 - 100 µL and 1 liter graduated cylinders
 - Tubes to prepare standard and sample dilutions
 - Absorbent paper
 - Microplate reader capable of measuring absorbance at 450nm
 - Log-log graph paper or computer and software for ELISA data analysis

Target Details

Target:	PRSS8
Alternative Name:	Prostasin (PRSS8 Products)
Background:	Gene Names: PRSS8 Protein names: Prostasin (EC 3.4.21.-) (Channel-activating protease 1) (CAP1) (Serine protease 8) [Cleaved into: Prostasin light chain, Prostasin heavy chain]
Gene ID:	5652
UniProt:	Q16651

Application Details

Application Notes:	Recommended Dilution for serum and plasma samples 2 fold
Sample Volume:	100 µL
Plate:	Pre-coated

Application Details

Protocol:	<ol style="list-style-type: none">1. Prepare all reagents, samples and standards as instructed in the manual.2. Add 100 μL of standard or sample to each well.3. Incubate 2.5 h at RT or O/N at 4 $^{\circ}$C.4. Add 100 μL of prepared biotin antibody to each well.5. Incubate 1 h at RT.6. Add 100 μL of prepared Streptavidin solution to each well.7. Incubate 45 min at RT.8. Add 100 μL of TMB One-Step Substrate Reagent to each well.9. Incubate 30 min at RT.10. Add 50 μL of Stop Solution to each well.11. Read at 450 nm immediately.
-----------	--

Restrictions:	For Research Use only
---------------	-----------------------

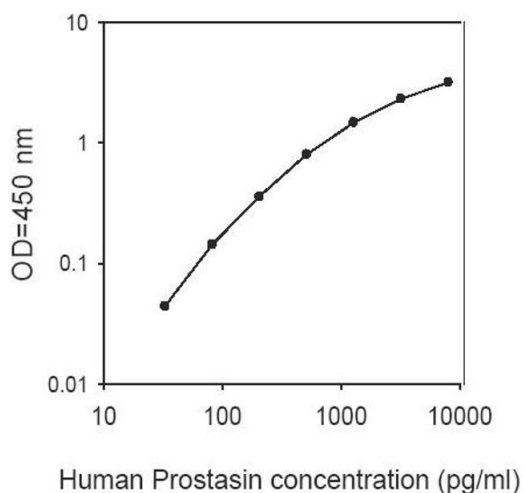
Handling

Storage:	-20 $^{\circ}$ C
----------	------------------

Storage Comment:	The entire kit may be stored at -20 $^{\circ}$ C for up to 1 year from the date of shipment. Avoid repeated freeze-thaw cycles. The kit may be stored at 4 $^{\circ}$ C for up to 6 months. For extended storage, it is recommended to store at -80 $^{\circ}$ C.
------------------	---

Expiry Date:	6 months
--------------	----------

Images



ELISA

Image 1.