

Datasheet for ABIN2703490
Thrombospondin 1 ELISA Kit



[Go to Product page](#)

1 Image

Overview

Quantity: 96 tests

Target: Thrombospondin 1 (THBS1)

Reactivity: Human

Method Type: Sandwich ELISA

Detection Range: 6-2000 ng/mL

Minimum Detection Limit: 6 ng/mL

Application: ELISA

Product Details

Purpose: Human Thrombospondin 1 ELISA Kit for cell culture supernatants, plasma, and serum samples.

Sample Type: Plasma, Cell Culture Supernatant, Serum

Analytical Method: Quantitative

Detection Method: Colorimetric

Specificity: This ELISA antibody pair detects human Thrombospondin-1. It shows less than 5 % cross-reactivity with recombinant human Thrombospondin-2 and recombinant human Thrombospondin-4.

Sensitivity: 6 ng/mL

Characteristics:

- Strip plates and additional reagents allow for use in multiple experiments
- Quantitative protein detection
- Establishes normal range
- The best products for confirmation of antibody array data

Product Details

Components:	<ul style="list-style-type: none">• Pre-Coated 96-well Strip Microplate• Wash Buffer• Stop Solution• Assay Diluent(s)• Lyophilized Standard• Biotinylated Detection Antibody• Streptavidin-Conjugated HRP• TMB One-Step Substrate
-------------	--

Material not included:	<ul style="list-style-type: none">• Distilled or deionized water• Precision pipettes to deliver 2 µL to 1 µL volumes• Adjustable 1-25 µL pipettes for reagent preparation• 100 µL and 1 liter graduated cylinders• Tubes to prepare standard and sample dilutions• Absorbent paper• Microplate reader capable of measuring absorbance at 450nm• Log-log graph paper or computer and software for ELISA data analysis
------------------------	---

Target Details

Target:	Thrombospondin 1 (THBS1)
Alternative Name:	Thrombospondin 1 (THBS1 Products)
Background:	Gene Names: THBS1 TSP TSP1 Protein names: Thrombospondin-1
Gene ID:	7057
UniProt:	P07996
Pathways:	Autophagy

Application Details

Application Notes:	Recommended Dilution for serum and plasma samples 10 - 200 fold
Sample Volume:	100 µL
Plate:	Pre-coated
Protocol:	<ol style="list-style-type: none">1. Prepare all reagents, samples and standards as instructed in the manual.2. Add 100 µL of standard or sample to each well.3. Incubate 2.5 h at RT or O/N at 4 °C.4. Add 100 µL of prepared biotin antibody to each well.

Application Details

5. Incubate 1 h at RT.
6. Add 100 μ L of prepared Streptavidin solution to each well.
7. Incubate 45 min at RT.
8. Add 100 μ L of TMB One-Step Substrate Reagent to each well.
9. Incubate 30 min at RT.
10. Add 50 μ L of Stop Solution to each well.
11. Read at 450 nm immediately.

Restrictions: For Research Use only

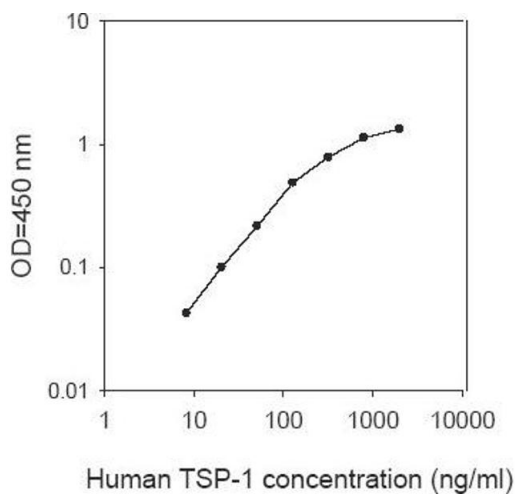
Handling

Storage: -20 °C

Storage Comment: The entire kit may be stored at -20°C for up to 1 year from the date of shipment. Avoid repeated freeze-thaw cycles. The kit may be stored at 4°C for up to 6 months. For extended storage, it is recommended to store at -80°C.

Expiry Date: 6 months

Images



ELISA

Image 1.