

Datasheet for ABIN2703722

Emilin1 Protein (AA 676-1016) (His-GST)[Go to Product page](#)**1** Image

Overview

Quantity:	50 µg
Target:	Emilin1 (EMILIN1)
Protein Characteristics:	AA 676-1016
Origin:	Human
Source:	Escherichia coli (E. coli)
Protein Type:	Recombinant
Purification tag / Conjugate:	This Emilin1 protein is labelled with His-GST.
Application:	Western Blotting (WB), ELISA, Antibody Production (AbP), Protein Array (PAr)

Product Details

Sequence:	676-1016 aa (partial length)
Purification:	6xHis-GST tags / Immobilized-metal affinity chromatography (IMAC)
Purity:	>90 %
Endotoxin Level:	Not tested

Target Details

Target:	Emilin1 (EMILIN1)
Alternative Name:	Elastin Microfibril Interface-Located Protein 1 (EMILIN1 Products)
Background:	Extracellular matrix protein
Molecular Weight:	64881 Da

Target Details

NCBI Accession: [NP_008977](#)

OMIM: 130660

UniProt: [Q9Y6C2](#)

Application Details

Application Notes: Optimal working dilution should be determined by the investigator.

Restrictions: For Research Use only

Handling

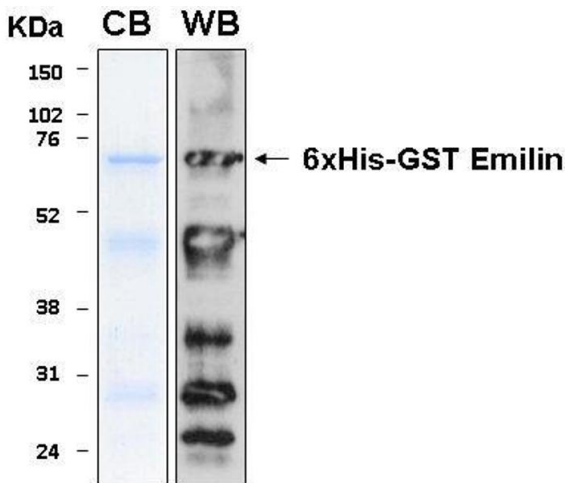
Format: Liquid

Buffer: Phosphate-Buffered Saline (PBS), pH 7.4. No preservatives added.

Storage: 4 °C/-80 °C

Storage Comment: Frozen / Solution. For extended storage, conserve at 80°C. Repeated freezing and thawing is not recommended. Store working aliquots at 4°C for up to one week.

Images



Western Blotting

Image 1. 10% SDS-PAGE stained with Coomassie Blue (CB), immunoblotting with anti-6xHis (WB) serum and peptide fingerprinting by MALDI-TOF-TOF mass spectrometry