



[Go to Product page](#)

Datasheet for ABIN2703737  
**CAN Protein (AA 1-170, AA 1-521)**

1 Image

### Overview

Quantity:	50 µg
Target:	CAN
Protein Characteristics:	AA 1-521, AA 1-170
Origin:	Human
Source:	Escherichia coli (E. coli)
Protein Type:	Recombinant
Application:	Western Blotting (WB), ELISA, Antibody Production (AbP), Protein Array (PAr)

### Product Details

Sequence:	1-521 and 1-170 (full-length)
Purification:	GST tag removed / Glutathione Sepharose affinity chromatography
Purity:	>90 %
Endotoxin Level:	Not tested

### Target Details

Target:	CAN
Alternative Name:	Calcineurin ( <a href="#">CAN Products</a> )
Background:	Protein serine/threonine phosphatase
Molecular Weight:	58688 Da and 19300 Da
NCBI Accession:	<a href="#">NP_000935</a>

## Target Details

OMIM: 114105

UniProt: [Q08209](#)

## Application Details

Application Notes: Optimal working dilution should be determined by the investigator.

Restrictions: For Research Use only

## Handling

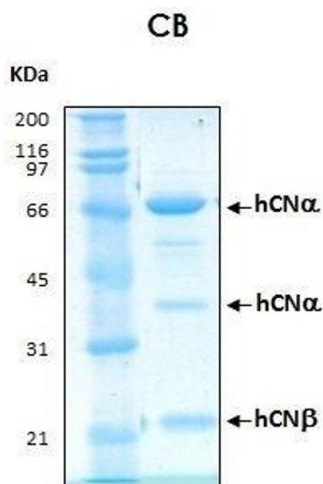
Format: Lyophilized

Buffer: 50 mM Tris-HCl, 150 mM NaCl, 1 mM EDTA, 1 mM DTT, pH 7.0

Storage: 4 °C/-80 °C

Storage Comment: Lyophilized. Prior to reconstitution, store the lyophilized protein at 28°C. After reconstitution, store in working aliquots at 80°C.

## Images



### SDS-PAGE

**Image 1.** 10% SDS-PAGE stained with Coomassie Blue (CB) and peptide fingerprinting by MALDI-TOF mass spectrometry