

Datasheet for ABIN2704160 **anti-CD11b antibody (PE)**



[Go to Product page](#)

1 Image

Overview

Quantity:	100 tests
Target:	CD11b (ITGAM)
Reactivity:	Human
Host:	Mouse
Clonality:	Monoclonal
Conjugate:	This CD11b antibody is conjugated to PE
Application:	Flow Cytometry (FACS)

Product Details

Purpose:	CD11b PE Antibody
Immunogen:	Human PBMC
Clone:	OKM1
Isotype:	IgG2b, kappa
Characteristics:	The clone OKM1, a mouse monoclonal antibody, binds with a 165 kDa adhesion glycoprotein present in human cells known as CD11b. CD11b associates with the 95 kDa integrin $\beta 2$ (CD18) to form the CD11b/CD18 complex, also known as Mac-1 or CR3. CD11b is expressed on activated lymphocytes, monocytes, granulocytes, and a subset of NK cells. CD11b functions in cell-cell and cell-substrate interactions and is a receptor for iC3b, CD54 (ICAM-1), CD102 (ICAM-2), and CD50 (ICAM-3).
Purification:	Purified
Purity:	>95 %

Product Details

Grade: GMP Grade

Target Details

Target: CD11b (ITGAM)

Alternative Name: CD11b (ITGAM Products)

NCBI Accession: [NM_000632](#)

UniProt: [P11215](#)

Pathways: [Apoptosis](#), [Activation of Innate immune Response](#), [Toll-Like Receptors Cascades](#), [Activated T Cell Proliferation](#)

Application Details

Application Notes: Optimal working dilution should be determined by the investigator.

Restrictions: For Research Use only

Handling

Format: Liquid

Concentration: 50 µg/mL

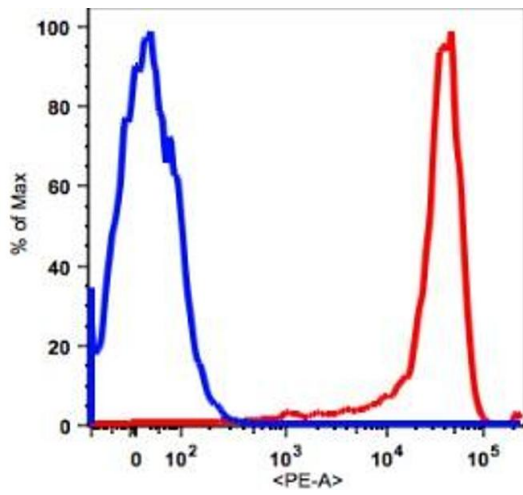
Buffer: PBS pH 7.2, 0.2 % (w/v) BSA, 0.09 % (w/v) sodium azide

Preservative: Sodium azide

Precaution of Use: This product contains Sodium azide: a POISONOUS AND HAZARDOUS SUBSTANCE which should be handled by trained staff only.

Storage: 4 °C

Storage Comment: 2-8°C, Conjugated antibodies should never be frozen.



Flow Cytometry

Image 1.