

Datasheet for ABIN2704171 **anti-CD14 antibody (FITC)**



[Go to Product page](#)

1 Image

Overview

Quantity:	100 tests
Target:	CD14
Reactivity:	Human, Cynomolgus, Rhesus Monkey, Baboon
Host:	Mouse
Clonality:	Monoclonal
Conjugate:	This CD14 antibody is conjugated to FITC
Application:	Flow Cytometry (FACS)

Product Details

Purpose:	CD14 FITC Antibody
Immunogen:	Cultured human peripheral blood monocytes
Clone:	26ic
Isotype:	IgG2b, kappa
Characteristics:	<p>The clone 26ic, a mouse monoclonal antibody, reacts with a human 53-55 kDa glycosylphosphatidylinositol (GPI)- anchored single chain cell surface antigen known as CD14. The CD14 expression is commonly observed on monocytes, interfollicular macrophages, reticular dendritic cells and some Langerhans cells. 26ic binds with a complex of LPS and lipopolysaccharide binding protein, and blockade of CD14 with monoclonal antibodies prevented the synthesis of TNF-alpha by LPS activated leukocytes.</p>
Purification:	Purified
Purity:	>95 %

Product Details

Grade: GMP Grade

Target Details

Target: CD14

Alternative Name: CD14 ([CD14 Products](#))

NCBI Accession: [NM_000591](#)

UniProt: [P08571](#)

Pathways: [TLR Signaling](#), [Activation of Innate immune Response](#), [Cellular Response to Molecule of Bacterial Origin](#), [Toll-Like Receptors Cascades](#)

Application Details

Application Notes: Optimal working dilution should be determined by the investigator.

Restrictions: For Research Use only

Handling

Format: Liquid

Concentration: 25 µg/mL

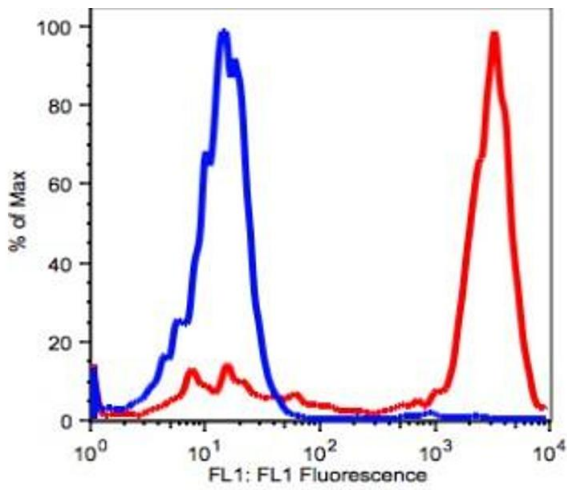
Buffer: PBS pH 7.2, 0.2 % (w/v) BSA, 0.09 % (w/v) sodium azide

Preservative: Sodium azide

Precaution of Use: This product contains Sodium azide: a POISONOUS AND HAZARDOUS SUBSTANCE which should be handled by trained staff only.

Storage: 4 °C

Storage Comment: 2-8°C, Conjugated antibodies should never be frozen.



Flow Cytometry

Image 1.