

## Datasheet for ABIN2704188 **anti-CD19 antibody (PE)**

### 2 Images



[Go to Product page](#)

### Overview

Quantity:	100 tests
Target:	CD19
Reactivity:	Human
Host:	Mouse
Clonality:	Monoclonal
Conjugate:	This CD19 antibody is conjugated to PE
Application:	Flow Cytometry (FACS)

### Product Details

Purpose:	CD19 PE Antibody
Immunogen:	Human CCL (chronic lymphocytic leukemia) cells
Clone:	4G7
Isotype:	IgG1, kappa
Characteristics:	<p>The clone 4G7 recognizes a 90- kDa CD19 antigen that is present on human B lymphocytes. The CD19 antigen is present on approximately 7 to 23 % of human peripheral blood lymphocytes at all stages of B cell maturation but is lost on terminally differentiated plasma cells. CD19 does not react with resting or activated T lymphocytes, granulocytes, or monocytes.</p>
Purification:	Purified
Purity:	>95 %
Grade:	GMP Grade

## Target Details

---

Target:	CD19
Alternative Name:	CD19 ( <a href="#">CD19 Products</a> )
NCBI Accession:	<a href="#">NM_001770</a>
UniProt:	<a href="#">P15391</a>
Pathways:	<a href="#">Fc-epsilon Receptor Signaling Pathway</a> , <a href="#">EGFR Signaling Pathway</a> , <a href="#">Neurotrophin Signaling Pathway</a>

## Application Details

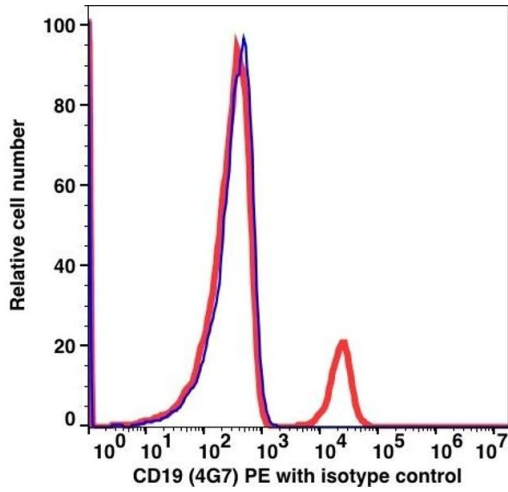
---

Application Notes:	Optimal working dilution should be determined by the investigator.
Restrictions:	For Research Use only

## Handling

---

Format:	Liquid
Concentration:	25 µg/mL
Buffer:	PBS pH 7.2, 0.2 % (w/v) BSA, 0.09 % (w/v) sodium azide
Preservative:	Sodium azide
Precaution of Use:	This product contains Sodium azide: a POISONOUS AND HAZARDOUS SUBSTANCE which should be handled by trained staff only.
Storage:	4 °C
Storage Comment:	2-8°C, Conjugated antibodies should never be frozen.



Flow Cytometry

Image 1.

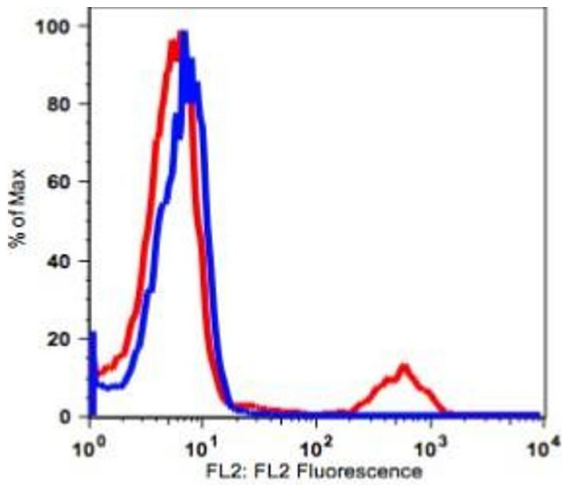


Image 2.