

Datasheet for ABIN2704199
anti-CD2 antibody (FITC)

3 Images

[Go to Product page](#)

Overview

Quantity:	100 tests
Target:	CD2
Reactivity:	Human
Host:	Mouse
Clonality:	Monoclonal
Conjugate:	This CD2 antibody is conjugated to FITC
Application:	Flow Cytometry (FACS)

Product Details

Immunogen:	Human acute lymphoblastic leukemia cells
Clone:	OKT11
Isotype:	IgG1 kappa
Characteristics:	CD2 is a 50kD type I transmembrane glycoprotein and a member of the immunoglobulin superfamily. It is a specific marker for T lymphocytes, natural killer cells, thymic B cell subsets, and some antigen presenting cells. CD2 interacts with CD58 (LFA-3) and CD48 to mediate cell adhesion and induce co-stimulatory signals in T lymphocytes.
Purification:	Purified
Purity:	>95 %
Grade:	GMP Grade

Target Details

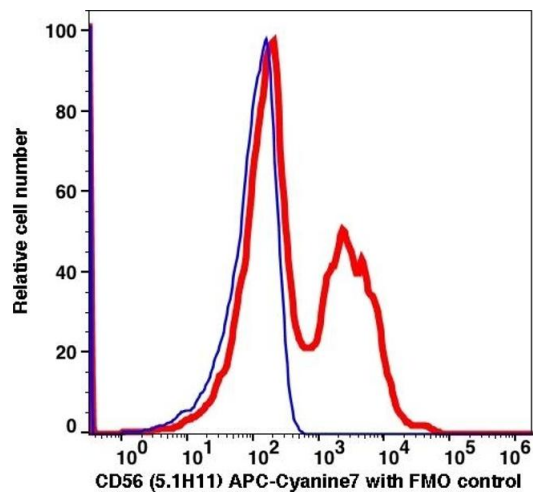
Target:	CD2
Alternative Name:	CD2 (CD2 Products)
Background:	CD2 is a 50kD type I transmembrane glycoprotein and a member of the immunoglobulin superfamily. It is a specific marker for T lymphocytes, natural killer cells, thymic B cell subsets, and some antigen presenting cells. CD2 interacts with CD58 (LFA-3) and CD48 to mediate cell adhesion and induce co-stimulatory signals in T lymphocytes.
NCBI Accession:	NM_001767
UniProt:	P06729

Application Details

Restrictions:	For Research Use only
---------------	-----------------------

Handling

Format:	Liquid
Concentration:	100 µg/mL
Buffer:	PBS pH 7.2, 0.2 % (w/v) BSA, 0.09 % (w/v) sodium azide
Preservative:	Sodium azide
Precaution of Use:	This product contains Sodium azide: a POISONOUS AND HAZARDOUS SUBSTANCE which should be handled by trained staff only.
Storage:	4 °C



Flow Cytometry

Image 1.

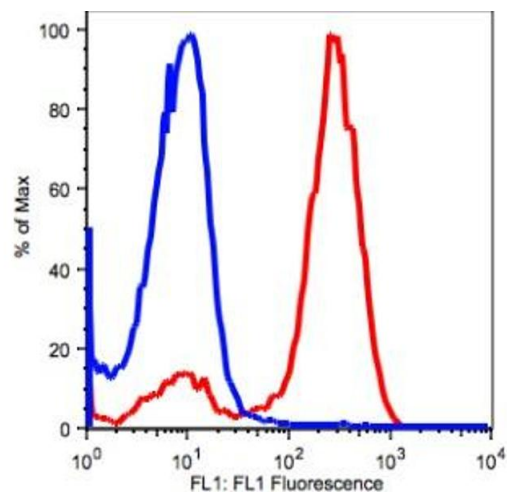
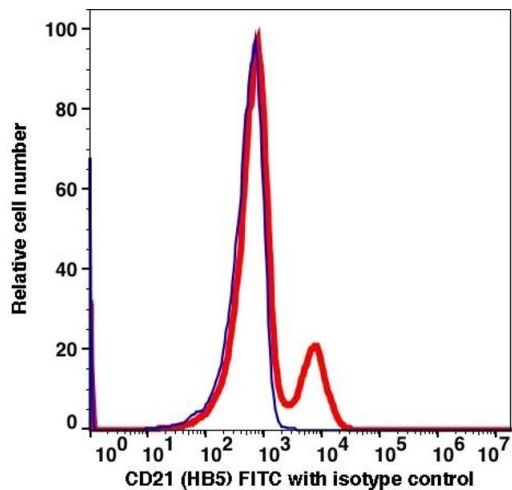


Image 2.



Flow Cytometry

Image 3.