

Datasheet for ABIN2704213 **anti-CD20 antibody (FITC)**

2 Images



[Go to Product page](#)

Overview

Quantity:	100 tests
Target:	CD20 (MS4A1)
Reactivity:	Human, Rhesus Monkey, Baboon, Cynomolgus
Host:	Mouse
Clonality:	Monoclonal
Conjugate:	This CD20 antibody is conjugated to FITC
Application:	Flow Cytometry (FACS)

Product Details

Purpose:	CD20 FITC Antibody
Immunogen:	Human tonsillar B cells
Clone:	2H7
Isotype:	IgG2b, kappa
Characteristics:	The clone 2H7 recognizes the large extracellular loop of human CD20, mapped to the peptide sequence YNCEPANPSEKNSPST. CD20, a 33-36 kDa non-glycosylated type 1 transmembrane protein, is expressed by developing, resting and mature B cells, some follicular dendritic cells, and a small subset of mature T cells. B cell CD20 expression is lost upon differentiation into plasma cells. Functionally, CD20 activation contributes to B cell activation, proliferation, and differentiation
Purification:	Purified
Purity:	>95 %

Product Details

Grade: GMP Grade

Target Details

Target: CD20 (MS4A1)

Alternative Name: CD20 ([MS4A1 Products](#))

NCBI Accession: [NM_152866](#)

UniProt: [P11836](#)

Application Details

Application Notes: Optimal working dilution should be determined by the investigator.

Restrictions: For Research Use only

Handling

Format: Liquid

Concentration: 100 µg/mL

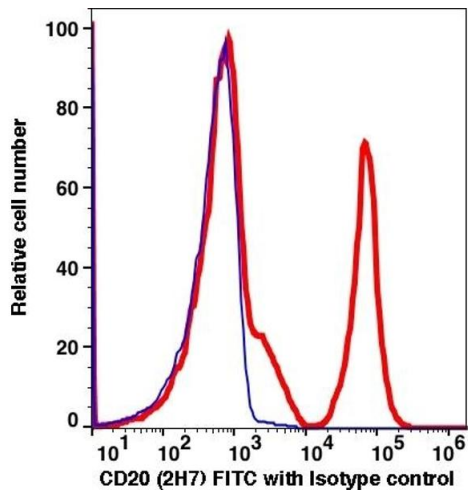
Buffer: PBS pH 7.2, 0.2 % (w/v) BSA, 0.09 % (w/v) sodium azide

Preservative: Sodium azide

Precaution of Use: This product contains Sodium azide: a POISONOUS AND HAZARDOUS SUBSTANCE which should be handled by trained staff only.

Storage: 4 °C

Storage Comment: 2-8°C, Conjugated antibodies should never be frozen.



Flow Cytometry

Image 1.

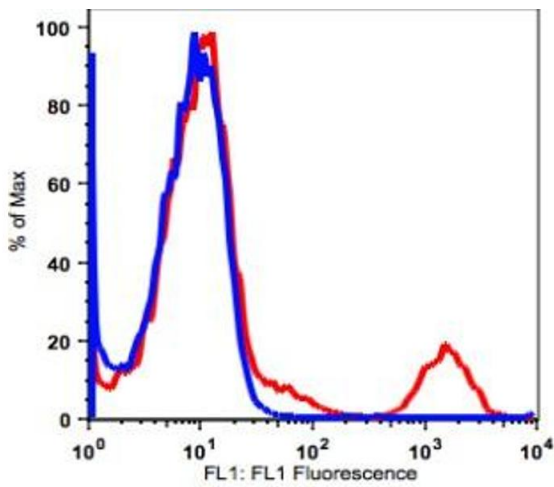


Image 2.