



[Go to Product page](#)

Datasheet for ABIN2704219
anti-CD20 antibody (PerCP)

2 Images

Overview

| | |
|--------------|---|
| Quantity: | 100 tests |
| Target: | CD20 (MS4A1) |
| Reactivity: | Human, Rhesus Monkey, Baboon, Cynomolgus |
| Host: | Mouse |
| Clonality: | Monoclonal |
| Conjugate: | This CD20 antibody is conjugated to PerCP |
| Application: | Flow Cytometry (FACS) |

Product Details

| | |
|------------------|--|
| Immunogen: | Human tonsillar B cells |
| Clone: | 2H7 |
| Isotype: | IgG2b kappa |
| Characteristics: | Antibody clone 2H7 recognizes the large extracellular loop of human CD20, mapped to the peptide sequence YNCEPANPSEKNSPST. CD20, a 33-36 kDa non-glycosylated type 1 transmembrane protein, is expressed by developing, resting and mature B cells, some follicular dendritic cells, and a small subset of mature T cells. B cell CD20 expression is lost upon differentiation into plasma cells. Functionally, CD20 activation contributes to B cell activation, proliferation, and differentiation |
| Purification: | Purified |
| Purity: | >95 % |
| Grade: | GMP Grade |

Target Details

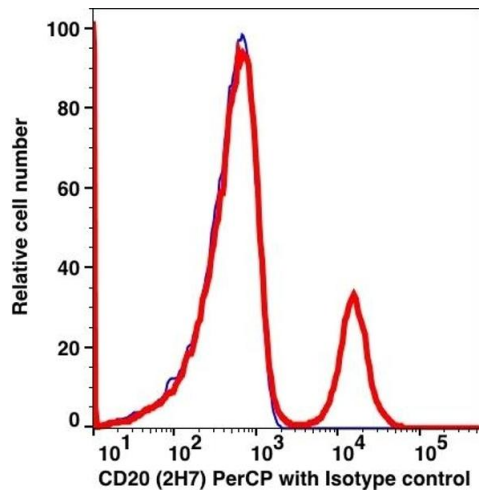
| | |
|-------------------|--|
| Target: | CD20 (MS4A1) |
| Alternative Name: | CD20 (MS4A1 Products) |
| Background: | Antibody clone 2H7 recognizes the large extracellular loop of human CD20, mapped to the peptide sequence YNCEPANPSEKNSPST. CD20, a 33-36 kDa non-glycosylated type 1 transmembrane protein, is expressed by developing, resting and mature B cells, some follicular dendritic cells, and a small subset of mature T cells. B cell CD20 expression is lost upon differentiation into plasma cells. Functionally, CD20 activation contributes to B cell activation, proliferation, and differentiation |
| NCBI Accession: | NM_152866 |
| UniProt: | P11836 |

Application Details

| | |
|---------------|-----------------------|
| Restrictions: | For Research Use only |
|---------------|-----------------------|

Handling

| | |
|--------------------|--|
| Format: | Liquid |
| Concentration: | 50 µg/mL |
| Buffer: | PBS pH 7.2, 0.2 % (w/v) BSA, 0.09 % (w/v) sodium azide |
| Preservative: | Sodium azide |
| Precaution of Use: | This product contains Sodium azide: a POISONOUS AND HAZARDOUS SUBSTANCE which should be handled by trained staff only. |
| Storage: | 4 °C |



Flow Cytometry

Image 1.

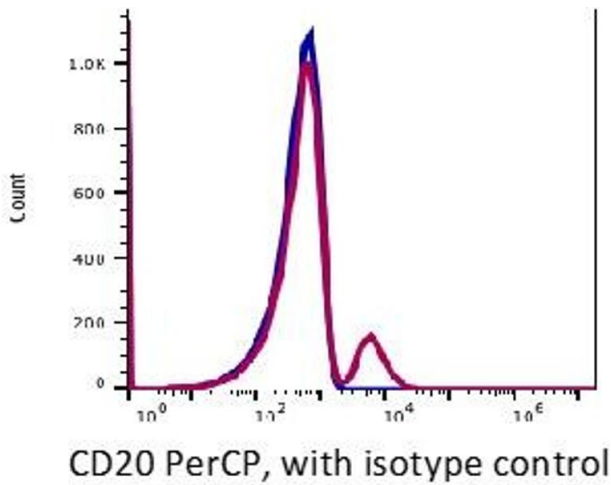


Image 2.