

Datasheet for ABIN2704224

anti-CD25 antibody**2** Images[Go to Product page](#)

Overview

Quantity:	100 µg
Target:	CD25 (IL2RA)
Reactivity:	Human
Host:	Mouse
Clonality:	Monoclonal
Conjugate:	This CD25 antibody is un-conjugated
Application:	Flow Cytometry (FACS)

Product Details

Immunogen:	Influenza virus stimulated human peripheral blood mononuclear cells
Clone:	7G7B6
Isotype:	IgG2a kappa
Characteristics:	The antibody specifically binds to the 55 kDa type I transmembrane glycoprotein known as the low-affinity interleukin-2 receptor alpha chain subunit (IL2R α , CD25). CD25 is expressed on regulatory T cells and on monocytes and activated lymphocytes (T and B). CD25 expression on T and B lymphocytes is upregulated by antigenic or mitogenic stimulation.
Purification:	Purified
Purity:	>95 %
Grade:	GMP Grade

Target Details

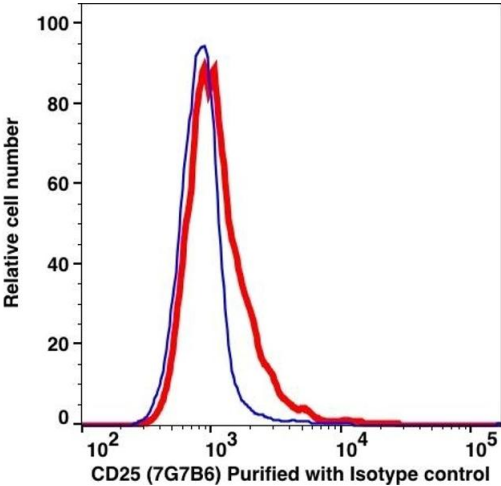
Target:	CD25 (IL2RA)
Alternative Name:	CD25 (IL2RA Products)
Background:	The antibody specifically binds to the 55 kDa type I transmembrane glycoprotein known as the low-affinity interleukin-2 receptor alpha chain subunit (IL2R α , CD25). CD25 is expressed on regulatory T cells and on monocytes and activated lymphocytes (T and B). CD25 expression on T and B lymphocytes is upregulated by antigenic or mitogenic stimulation.
NCBI Accession:	NM_000417
UniProt:	P01589
Pathways:	JAK-STAT Signaling , Growth Factor Binding , Activated T Cell Proliferation

Application Details

Restrictions:	For Research Use only
---------------	-----------------------

Handling

Format:	Liquid
Concentration:	0.5 mg/mL
Buffer:	PBS pH 7.2, 0.1 % (w/v) BSA, 0.09 % (w/v) sodium azide
Preservative:	Sodium azide
Precaution of Use:	This product contains Sodium azide: a POISONOUS AND HAZARDOUS SUBSTANCE which should be handled by trained staff only.
Storage:	4 °C



Flow Cytometry

Image 1.

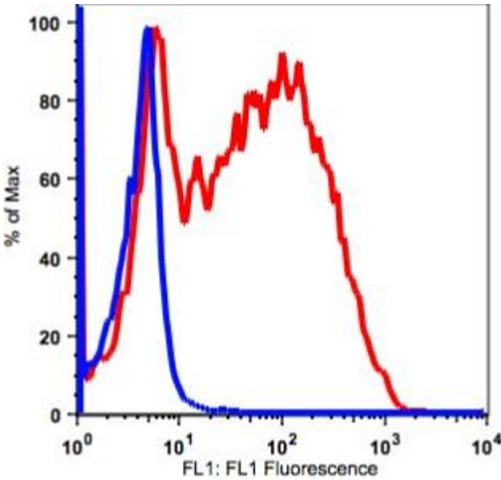


Image 2.