

## Datasheet for ABIN2704227 **anti-CD25 antibody (FITC)**

### 2 Images



[Go to Product page](#)

### Overview

Quantity:	100 tests
Target:	CD25 (IL2RA)
Reactivity:	Human
Host:	Mouse
Clonality:	Monoclonal
Conjugate:	This CD25 antibody is conjugated to FITC
Application:	Flow Cytometry (FACS)

### Product Details

Purpose:	CD25 FITC Antibody
Immunogen:	Influenza virus stimulated human peripheral blood mononuclear cells
Clone:	7G7B6
Isotype:	IgG2a, kappa
Characteristics:	The antibody specifically binds to the 55 kDa type I transmembrane glycoprotein known as the low-affinity interleukin-2 receptor alpha chain subunit (IL2R $\alpha$ , CD25). CD25 is expressed on regulatory T cells and on monocytes and activated lymphocytes (T and B). CD25 expression on T and B lymphocytes is upregulated by antigenic or mitogenic stimulation.
Purification:	Purified
Purity:	>95 %
Grade:	GMP Grade

## Target Details

Target:	CD25 (IL2RA)
Alternative Name:	CD25 (IL2RA Products)
NCBI Accession:	NM_000417
UniProt:	P01589
Pathways:	JAK-STAT Signaling, Growth Factor Binding, Activated T Cell Proliferation

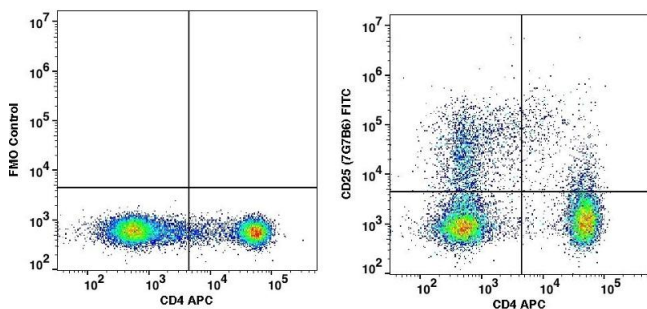
## Application Details

Application Notes:	Optimal working dilution should be determined by the investigator.
Restrictions:	For Research Use only

## Handling

Format:	Liquid
Concentration:	100 µg/mL
Buffer:	PBS pH 7.2, 0.2 % (w/v) BSA, 0.09 % (w/v) sodium azide
Preservative:	Sodium azide
Precaution of Use:	This product contains Sodium azide: a POISONOUS AND HAZARDOUS SUBSTANCE which should be handled by trained staff only.
Storage:	4 °C
Storage Comment:	2-8°C, Conjugated antibodies should never be frozen.

## Images



### Flow Cytometry

#### Image 1.

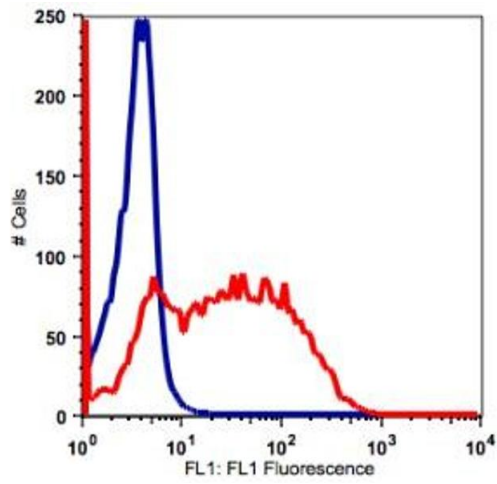


Image 2.