

Datasheet for ABIN2704252

anti-Fc gamma RII (CD32) antibody (PE)



[Go to Product page](#)

2 Images

1 Publication

Overview

Quantity:	100 tests
Target:	Fc gamma RII (CD32)
Reactivity:	Human
Host:	Mouse
Clonality:	Monoclonal
Conjugate:	PE
Application:	Flow Cytometry (FACS)

Product Details

Immunogen:	K-562 human erythromyeloblastoid leukemia cell line
Clone:	IV-3
Isotype:	IgG2b kappa
Characteristics:	IV.3 reacts with a low affinity receptor for the Fc of IgG (FcγRII, CD32) that is expressed on human platelets, monocytes, granulocytes and B cells. IV.3 also cross-reacts with granulocytes and monocytes from peripheral blood lymphocytes from non-human primates
Purification:	Purified
Purity:	>95 %
Grade:	GMP Grade

Target Details

Target:	Fc gamma RII (CD32)
Alternative Name:	CD32 (CD32 Products)
Background:	IV.3 reacts with a low affinity receptor for the Fc of IgG (FcγRII, CD32) that is expressed on human platelets, monocytes, granulocytes and B cells. IV.3 also cross-reacts with granulocytes and monocytes from peripheral blood lymphocytes from non-human primates
NCBI Accession:	NM_021642
UniProt:	P12318

Application Details

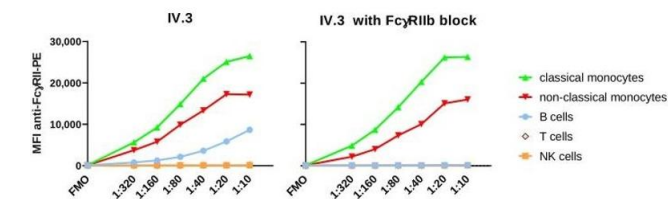
Restrictions:	For Research Use only
---------------	-----------------------

Handling

Format:	Liquid
Concentration:	50 µg/mL
Buffer:	PBS pH 7.2, 0.2 % (w/v) BSA, 0.09 % (w/v) sodium azide
Preservative:	Sodium azide
Precaution of Use:	This product contains Sodium azide: a POISONOUS AND HAZARDOUS SUBSTANCE which should be handled by trained staff only.
Storage:	4 °C

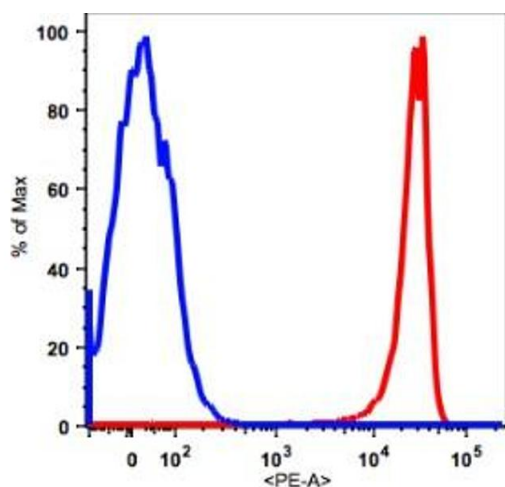
Publications

Product cited in:	Kerntke, Nimmerjahn, Biburger: "There Is (Scientific) Strength in Numbers: A Comprehensive Quantitation of Fc Gamma Receptor Numbers on Human and Murine Peripheral Blood Leukocytes." in: Frontiers in immunology , Vol. 11, pp. 118, (2020) (PubMed).
-------------------	--



Flow Cytometry

Image 1. Titration of anti-Fc γ RII clone IV.3 on human leukocyte populations. Depicted are the fluorescence intensities of the indicated cell populations upon staining with serial dilutions of PE conjugated anti-Fc γ RII clone IV.3. Cells were stained either without blocking of Fc γ RIIb or after pre-incubation with anti-Fc γ RIIb antibody 2B6-N297Q. Source: PMID32117269



Flow Cytometry

Image 2.