

## Datasheet for ABIN2704260 **anti-CD38 antibody (FITC)**

### 2 Images



[Go to Product page](#)

### Overview

Quantity:	100 tests
Target:	CD38
Reactivity:	Human, Baboon, Cynomolgus, Rhesus Monkey
Host:	Mouse
Clonality:	Monoclonal
Conjugate:	This CD38 antibody is conjugated to FITC
Application:	Flow Cytometry (FACS)

### Product Details

Purpose:	CD38 FITC Antibody
Immunogen:	Human acute lymphoblastic leukaemia cells
Clone:	OKT10
Isotype:	IgG1, kappa
Characteristics:	The clone OKT10, a mouse monoclonal antibody, recognizes a 45 kDa, type II transmembrane cell surface glycoprotein known as CD38. The CD38 antigen is expressed on pre-B lymphocytes, plasma cells, thymocytes and monocytes. CD38 also presents on activated T lymphocytes, natural killer (NK) lymphocytes, myeloblasts, and erythroblasts. Antigen expression is detected during the early stage of T- and B-lymphocyte differentiation, then lost during the intermediate stage of maturation, only to reappear during the final stage of maturation. The CD38 antigen is expressed on 90 % of CD34+ cells and is not expressed on pluripotent stem cells. CD38 is expressed in T- and B-acute lymphoblastic leukemia (ALL),

## Product Details

---

Burkitt's lymphoma, multiple myeloma, acute myeloid leukemia (AML), and chronic lymphocytic leukemia (CLL).

Purification: Purified

Purity: >95 %

Grade: GMP Grade

## Target Details

---

Target: CD38

Abstract: [CD38 Products](#)

NCBI Accession: [NM\\_001775](#)

UniProt: [P28907](#)

## Application Details

---

Application Notes: Optimal working dilution should be determined by the investigator.

Restrictions: For Research Use only

## Handling

---

Format: Liquid

Concentration: 200 µg/mL

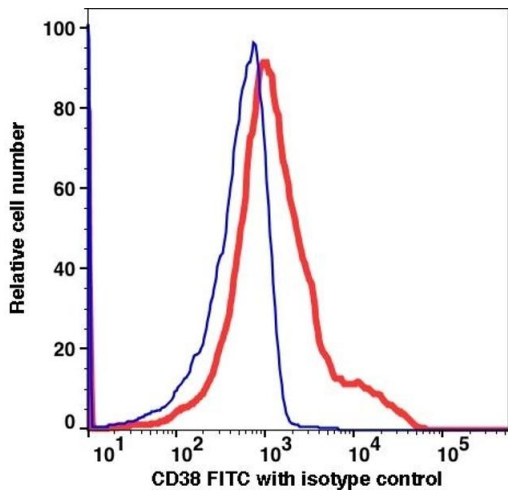
Buffer: PBS pH 7.2, 0.2 % (w/v) BSA, 0.09 % (w/v) sodium azide

Preservative: Sodium azide

Precaution of Use: This product contains Sodium azide: a POISONOUS AND HAZARDOUS SUBSTANCE which should be handled by trained staff only.

Storage: 4 °C

Storage Comment: 2-8°C, Conjugated antibodies should never be frozen.



Flow Cytometry

Image 1.

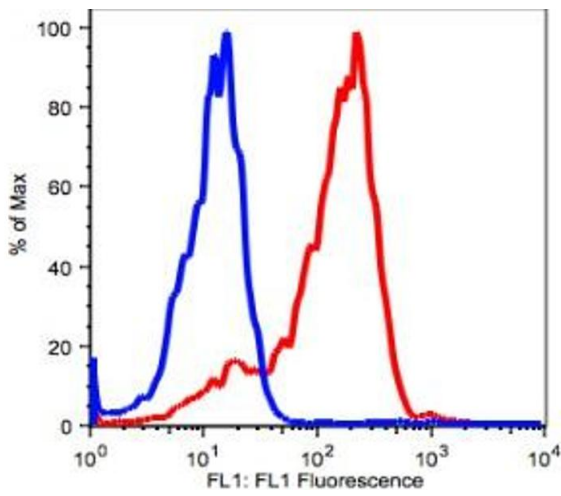


Image 2.