



[Go to Product page](#)

Datasheet for ABIN2704307  
**anti-L-Selectin antibody**

2 Images

Overview

Quantity:	100 µg
Target:	L-Selectin (SELL)
Reactivity:	Human, Baboon
Host:	Mouse
Clonality:	Monoclonal
Conjugate:	This L-Selectin antibody is un-conjugated
Application:	Flow Cytometry (FACS)

Product Details

Immunogen:	PMA-activated human peripheral blood leukocytes
Clone:	DREG56
Isotype:	IgG1 kappa
Characteristics:	The antibody reacts with a 76-95 kDa glycoprotein referred to as L-selectin (CD62L, LECAM, LAM-1, Leu8). As a human lymphocyte homing receptor for peripheral lymph node high endothelial venules (HEV), CD62L is expressed on neutrophils, monocytes, T- and B-lymphocyte subsets and NK cells.
Purification:	Purified
Purity:	>95 %
Grade:	GMP Grade

## Target Details

---

Target:	L-Selectin (SELL)
Alternative Name:	CD62L ( <a href="#">SELL Products</a> )
Background:	The antibody reacts with a 76-95 kDa glycoprotein referred to as L-selectin (CD62L, LECAM, LAM-1, Leu8). As a human lymphocyte homing receptor for peripheral lymph node high endothelial venules (HEV), CD62L is expressed on neutrophils, monocytes, T- and B-lymphocyte subsets and NK cells.
NCBI Accession:	<a href="#">NM_000655</a>
UniProt:	<a href="#">P14151</a>

## Application Details

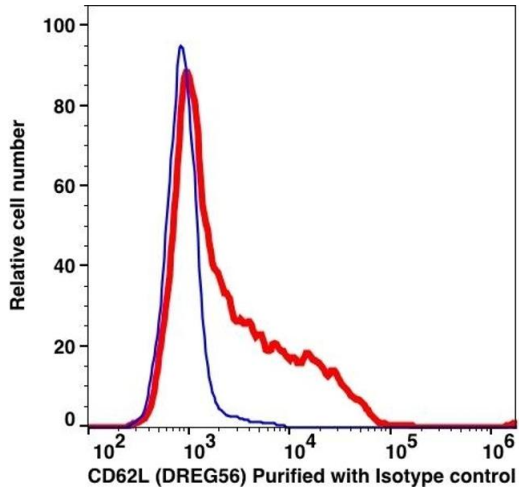
---

Restrictions:	For Research Use only
---------------	-----------------------

## Handling

---

Format:	Liquid
Concentration:	0.5 mg/mL
Buffer:	PBS pH 7.2, 0.1 % (w/v) BSA, 0.09 % (w/v) sodium azide
Preservative:	Sodium azide
Precaution of Use:	This product contains Sodium azide: a POISONOUS AND HAZARDOUS SUBSTANCE which should be handled by trained staff only.
Storage:	4 °C



### Flow Cytometry

Image 1.

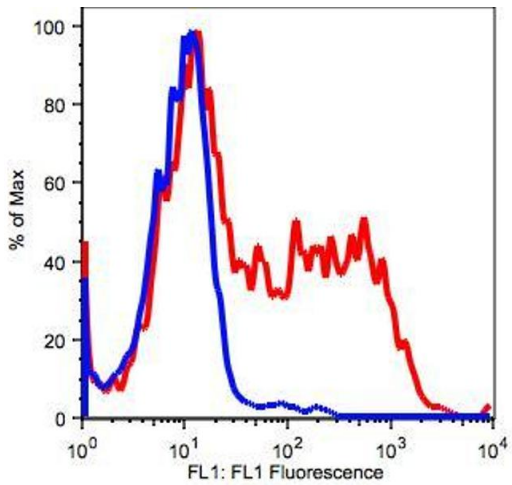


Image 2.