

Datasheet for ABIN2704313  
**anti-L-Selectin antibody (PE)**



[Go to Product page](#)

2 Images

## Overview

Quantity:	100 tests
Target:	L-Selectin (SELL)
Reactivity:	Human, Baboon
Host:	Mouse
Clonality:	Monoclonal
Conjugate:	This L-Selectin antibody is conjugated to PE
Application:	Flow Cytometry (FACS)

## Product Details

Purpose:	CD62L PE Antibody
Immunogen:	PMA-activated human peripheral blood leukocytes
Clone:	DREG56
Isotype:	IgG1, kappa
Characteristics:	The antibody reacts with a 76-95 kDa glycoprotein referred to as L-selectin (CD62L, LECAM, LAM-1, Leu8). As a human lymphocyte homing receptor for peripheral lymph node high endothelial venules (HEV), CD62L is expressed on neutrophils, monocytes, T- and B-lymphocyte subsets and NK cells.
Purification:	Purified
Purity:	>95 %
Grade:	GMP Grade

## Target Details

Target:	L-Selectin (SELL)
Alternative Name:	CD62L (SELL Products)
NCBI Accession:	<a href="#">NM_000655</a>
UniProt:	<a href="#">P14151</a>

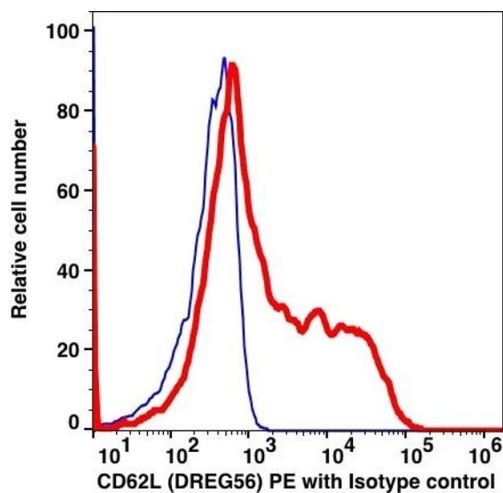
## Application Details

Application Notes:	Optimal working dilution should be determined by the investigator.
Restrictions:	For Research Use only

## Handling

Format:	Liquid
Concentration:	25 µg/mL
Buffer:	PBS pH 7.2, 0.2 % (w/v) BSA, 0.09 % (w/v) sodium azide
Preservative:	Sodium azide
Precaution of Use:	This product contains Sodium azide: a POISONOUS AND HAZARDOUS SUBSTANCE which should be handled by trained staff only.
Storage:	4 °C
Storage Comment:	2-8°C, Conjugated antibodies should never be frozen.

## Images



### Flow Cytometry

Image 1.

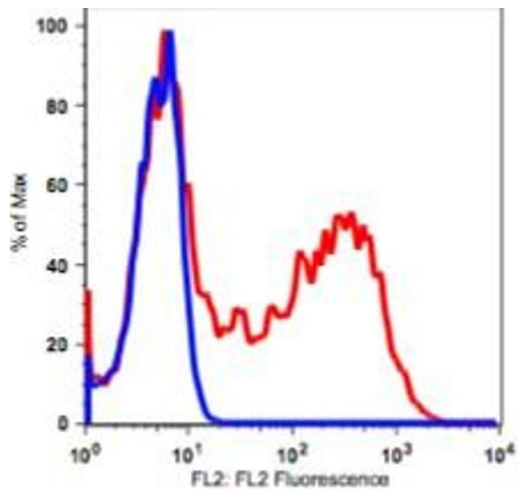


Image 2.