

## Datasheet for ABIN2704340 **anti-CD8 antibody (FITC)**



[Go to Product page](#)

### 1 Image

#### Overview

Quantity:	100 tests
Target:	CD8
Reactivity:	Human
Host:	Mouse
Clonality:	Monoclonal
Conjugate:	This CD8 antibody is conjugated to FITC
Application:	Flow Cytometry (FACS)

#### Product Details

Purpose:	CD8 FITC Antibody
Immunogen:	Human peripheral blood T lymphocytes
Clone:	OKT8
Isotype:	IgG2a, kappa
Characteristics:	Clone OKT8, a mouse monoclonal antibody, binds with a 32-34 kDa type I transmembrane glycoprotein known as CD8 a member of the immunoglobulin superfamily. OKT8 binds to CD8 $\alpha$ , which forms either a homodimer or a heterodimer with CD8 $\beta$ . It is expressed on the surface of cytotoxic T cells, NK cells, cortical thymocytes, and on some dendritic cells. CD8 functions as a co-receptor for T-cell receptors and specifically binds to class I MHC for antigen recognition and T-cell activation.
Purification:	Purified
Purity:	>95 %

## Product Details

---

Grade: GMP Grade

## Target Details

---

Target: CD8

Alternative Name: CD8 ([CD8 Products](#))

NCBI Accession: [NM\\_001768](#)

UniProt: [P01732](#)

## Application Details

---

Application Notes: Optimal working dilution should be determined by the investigator.

Restrictions: For Research Use only

## Handling

---

Format: Liquid

Concentration: 100 µg/mL

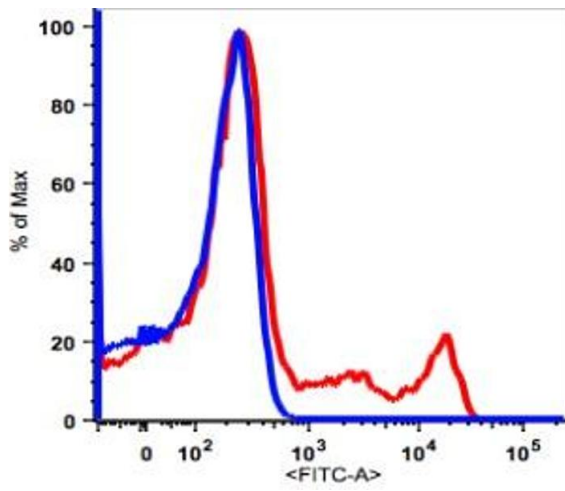
Buffer: PBS pH 7.2, 0.2 % (w/v) BSA, 0.09 % (w/v) sodium azide

Preservative: Sodium azide

Precaution of Use: This product contains Sodium azide: a POISONOUS AND HAZARDOUS SUBSTANCE which should be handled by trained staff only.

Storage: 4 °C

Storage Comment: 2-8°C, Conjugated antibodies should never be frozen.



### Flow Cytometry

Image 1.