

Datasheet for ABIN2704367  
**anti-HLA-DR antibody (FITC)**



[Go to Product page](#)

1 Image

## Overview

Quantity:	100 tests
Target:	HLA-DR
Reactivity:	Human, Baboon, Cynomolgus, Rhesus Monkey
Host:	Mouse
Clonality:	Monoclonal
Conjugate:	This HLA-DR antibody is conjugated to FITC
Application:	Flow Cytometry (FACS)

## Product Details

Purpose:	Anti-HLA-DR FITC Antibody
Immunogen:	Human B lymphocytes
Clone:	L243
Isotype:	IgG2a, kappa
Characteristics:	The L243 reacts with human HLA-DR antigen which is expressed on B lymphocytes, monocytes, macrophages, activated T lymphocytes, activated natural killer (NK) lymphocytes, and human progenitor cells. HLA-DR is also present on thymic epithelium, B lymphocyte dependent areas of spleen and lymph node, and B cell lymphomas.
Purification:	Purified
Purity:	>95 %
Grade:	GMP Grade

## Target Details

---

Target:	HLA-DR
Alternative Name:	HLA-DR ( <a href="#">HLA-DR Products</a> )
Gene ID:	3122, 3123
NCBI Accession:	<a href="#">NM_019111</a>
UniProt:	<a href="#">P01903</a>
Pathways:	<a href="#">Human Leukocyte Antigen (HLA) in Adaptive Immune Response</a>

## Application Details

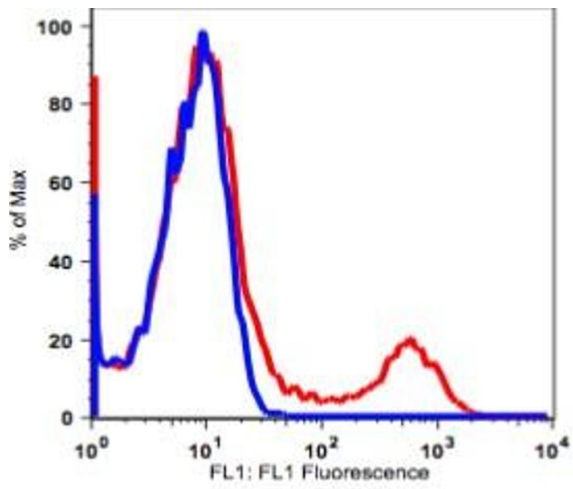
---

Application Notes:	Optimal working dilution should be determined by the investigator.
Restrictions:	For Research Use only

## Handling

---

Format:	Liquid
Concentration:	100 µg/mL
Buffer:	PBS pH 7.2, 0.2 % (w/v) BSA, 0.09 % (w/v) sodium azide
Preservative:	Sodium azide
Precaution of Use:	This product contains Sodium azide: a POISONOUS AND HAZARDOUS SUBSTANCE which should be handled by trained staff only.
Storage:	4 °C
Storage Comment:	2-8°C, Conjugated antibodies should never be frozen.



## Flow Cytometry

Image 1.