

Datasheet for ABIN2704381

Mouse IgG1 isotype control (FITC)[Go to Product page](#)**1** Image

Overview

Quantity:	100 tests
Target:	IgG1
Host:	Mouse
Clonality:	Monoclonal
Conjugate:	FITC
Application:	Flow Cytometry (FACS), Isotype Control (IsoC)

Product Details

Clone:	MOPC-31C
Isotype:	IgG1 kappa
Characteristics:	The MOPC-31C is a useful for comparative expression analysis including flow cytometry, Western blotting, immunoprecipitation, immunohistochemistry, and immunocytochemistry. The transplantable plasmacytoma MOPC-31C was induced by intraperitoneal injection of mineral oils into BALB/c mice. It was adapted to continuous cell culture by alternate passage in animals.
Purification:	Purified
Purity:	>95 %
Grade:	GMP Grade

Target Details

Target:	IgG1
---------	------

Target Details

Alternative Name: IgG1 kappa ([IgG1 Products](#))

Target Type: Antibody

Background: The MOPC-31C is a useful for comparative expression analysis including flow cytometry, Western blotting, immunoprecipitation, immunohistochemistry, and immunocytochemistry. The transplantable plasmacytoma MOPC-31C was induced by intraperitoneal injection of mineral oils into BALB/c mice. It was adapted to continuous cell culture by alternate passage in animals.

Application Details

Restrictions: For Research Use only

Handling

Format: Liquid

Concentration: 100 µg/mL

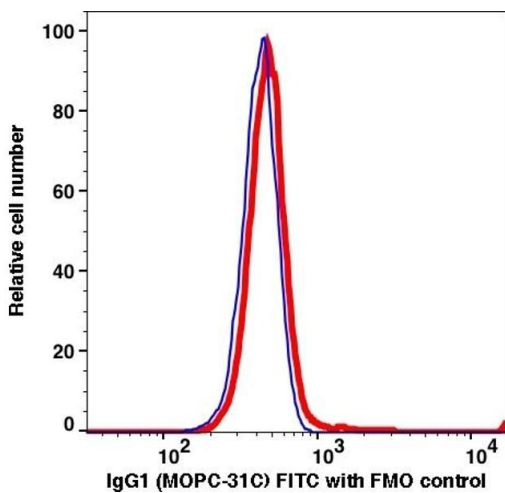
Buffer: PBS pH 7.2, 0.2 % (w/v) BSA, 0.09 % (w/v) sodium azide

Preservative: Sodium azide

Precaution of Use: This product contains Sodium azide: a POISONOUS AND HAZARDOUS SUBSTANCE which should be handled by trained staff only.

Storage: 4 °C

Images



Flow Cytometry

Image 1.