



[Go to Product page](#)

Datasheet for ABIN2708319

MICA ELISA Kit

1 Image

Overview

Quantity:	96 tests
Target:	MICA
Reactivity:	Human
Method Type:	Sandwich ELISA
Detection Range:	62.5-4000 pg/mL
Minimum Detection Limit:	62.5 pg/mL
Application:	ELISA

Product Details

Purpose:	Sandwich ELISA for quantitative detection of Human MICA concentrations.
Sample Type:	Cell Culture Supernatant, Cell Lysate, Tissue Homogenate, Serum
Analytical Method:	Quantitative
Detection Method:	Colorimetric
Sensitivity:	10 pg/mL

Target Details

Target:	MICA
Alternative Name:	MICA (MICA Products)
Background:	PERB11.1, MHC class I polypeptide-related sequence A, MIC-A
Gene ID:	100507436

Target Details

UniProt: [Q29983](#)

Pathways: [Activation of Innate immune Response](#), [Transition Metal Ion Homeostasis](#)

Application Details

Application Notes: Optimal working dilution should be determined by the investigator.

Plate: Pre-coated

Restrictions: For Research Use only

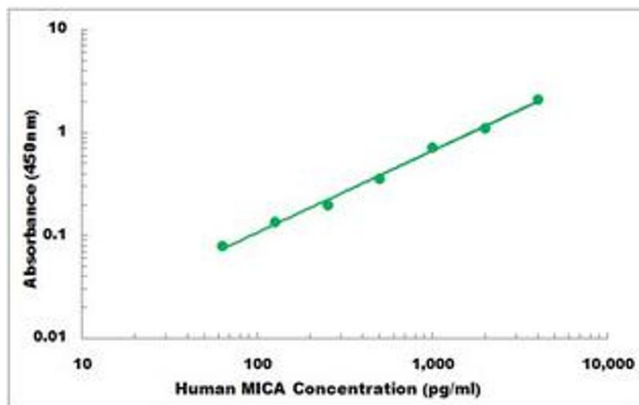
Handling

Storage: 4 °C, -20 °C

Storage Comment: Shipped and store at 4°C for 6 months, store at -20°C for one year.
Avoid freeze/thaw cycles.

Expiry Date: 12 months

Images



ELISA

Image 1. Representative Standard Curve