



[Go to Product page](#)

Datasheet for ABIN2708321

Midkine ELISA Kit

1 Image

Overview

| | |
|--------------------------|----------------|
| Quantity: | 96 tests |
| Target: | Midkine (MDK) |
| Reactivity: | Human |
| Method Type: | Sandwich ELISA |
| Detection Range: | 78-5000 pg/mL |
| Minimum Detection Limit: | 78 pg/mL |
| Application: | ELISA |

Product Details

| | |
|--------------------|--|
| Purpose: | Sandwich ELISA for quantitative detection of Human Midkine concentrations. |
| Sample Type: | Cell Culture Supernatant, Serum, Plasma |
| Analytical Method: | Quantitative |
| Detection Method: | Colorimetric |
| Sensitivity: | 10 pg/mL |

Target Details

| | |
|-------------------|--|
| Target: | Midkine (MDK) |
| Alternative Name: | Midkine (MDK Products) |
| Background: | MK1, NEGF2, Midkine, MK, Amphiregulin-associated protein, ARAP, Midgestation and kidney protein, Neurite outgrowth-promoting factor 2, Neurite outgrowth-promoting protein |

Target Details

| | |
|-----------|---|
| Gene ID: | 4192 |
| UniProt: | P21741 |
| Pathways: | RTK Signaling , M Phase , Skeletal Muscle Fiber Development |

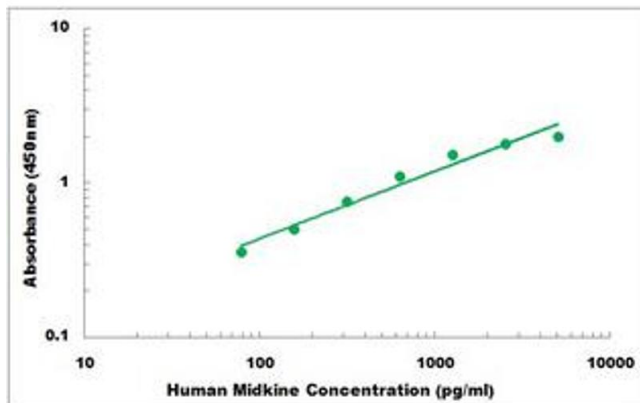
Application Details

| | |
|--------------------|--|
| Application Notes: | Optimal working dilution should be determined by the investigator. |
| Plate: | Pre-coated |
| Restrictions: | For Research Use only |

Handling

| | |
|------------------|--|
| Storage: | 4 °C,-20 °C |
| Storage Comment: | Shipped and store at 4°C for 6 months, store at -20°C for one year. Avoid freeze/thaw cycles. |
| Expiry Date: | 12 months |

Images



ELISA

Image 1. Representative Standard Curve