



[Go to Product page](#)

Datasheet for ABIN2708378

Survivin ELISA Kit

1 Image

Overview

Quantity:	96 tests
Target:	Survivin (BIRC5)
Reactivity:	Human
Method Type:	Sandwich ELISA
Detection Range:	62.5-4000 pg/mL
Minimum Detection Limit:	62.5 pg/mL
Application:	ELISA

Product Details

Purpose:	Sandwich ELISA for quantitative detection of Human Survivin concentrations.
Sample Type:	Cell Culture Supernatant, Serum, Plasma
Analytical Method:	Quantitative
Detection Method:	Colorimetric
Sensitivity:	2 pg/mL

Target Details

Target:	Survivin (BIRC5)
Alternative Name:	Survivin (BIRC5 Products)
Background:	API4, IAP4, Baculoviral IAP repeat-containing protein 5, Apoptosis inhibitor 4, Apoptosis inhibitor survivin

Target Details

Gene ID:	332
UniProt:	O15392
Pathways:	Apoptosis , Cell Division Cycle , Nuclear Hormone Receptor Binding

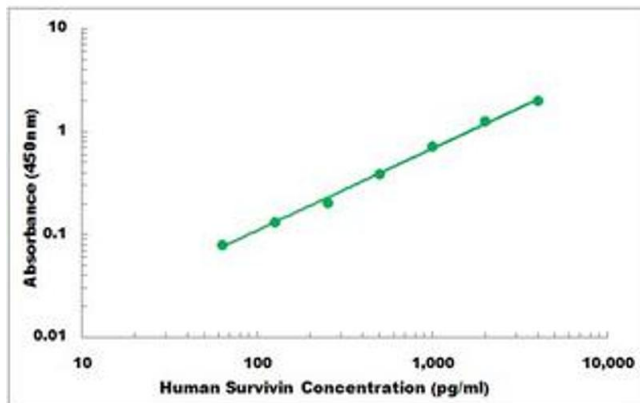
Application Details

Application Notes:	Optimal working dilution should be determined by the investigator.
Plate:	Pre-coated
Restrictions:	For Research Use only

Handling

Storage:	4 °C,-20 °C
Storage Comment:	Shipped and store at 4°C for 6 months, store at -20°C for one year. Avoid freeze/thaw cycles.
Expiry Date:	12 months

Images



ELISA

Image 1. Representative Standard Curve