



[Go to Product page](#)

Datasheet for ABIN2708469

## CD31 ELISA Kit

### 1 Image

#### Overview

Quantity:	96 tests
Target:	CD31 (PECAM1)
Reactivity:	Mouse
Method Type:	Sandwich ELISA
Detection Range:	156-10000 pg/mL
Minimum Detection Limit:	156 pg/mL
Application:	ELISA

#### Product Details

Purpose:	Sandwich ELISA for quantitative detection of Mouse CD31 concentrations.
Sample Type:	Cell Culture Supernatant, Serum, Plasma
Analytical Method:	Quantitative
Detection Method:	Colorimetric
Sensitivity:	10 pg/mL

#### Target Details

Target:	CD31 (PECAM1)
Alternative Name:	CD31 ( <a href="#">PECAM1 Products</a> )
Background:	Platelet endothelial cell adhesion molecule, PECAM-1, EndoCAM, GPIIA', PECA1, CD31
Gene ID:	18613

## Target Details

UniProt: [Q08481](#)

Pathways: [Regulation of Actin Filament Polymerization](#)

## Application Details

Application Notes: Optimal working dilution should be determined by the investigator.

Plate: Pre-coated

Restrictions: For Research Use only

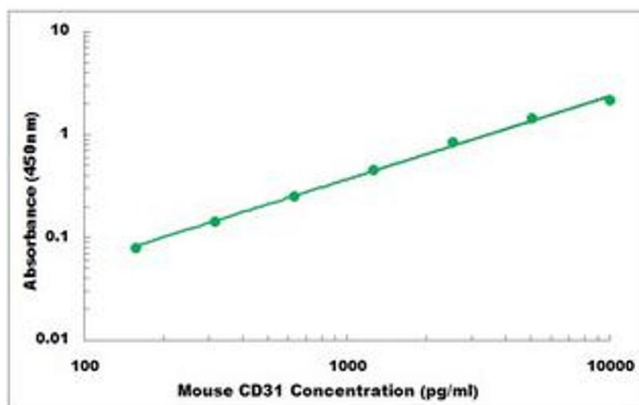
## Handling

Storage: 4 °C, -20 °C

Storage Comment: Shipped and store at 4°C for 6 months, store at -20°C for one year.  
Avoid freeze/thaw cycles.

Expiry Date: 12 months

## Images



### ELISA

**Image 1.** Representative Standard Curve