



[Go to Product page](#)

Datasheet for ABIN2708592

## PRSS8 ELISA Kit

### 1 Image

#### Overview

Quantity:	96 tests
Target:	PRSS8
Reactivity:	Mouse
Method Type:	Sandwich ELISA
Detection Range:	780-50000 pg/mL
Minimum Detection Limit:	780 pg/mL
Application:	ELISA

#### Product Details

Purpose:	Sandwich ELISA for quantitative detection of Mouse Proastasin concentrations.
Sample Type:	Cell Culture Supernatant, Serum, Plasma, Urine
Analytical Method:	Quantitative
Detection Method:	Colorimetric
Sensitivity:	50 pg/mL

#### Target Details

Target:	PRSS8
Alternative Name:	Proastasin ( <a href="#">PRSS8 Products</a> )
Background:	Proastasin, Channel-activating protease 1, CAP1, Serine protease 8
Gene ID:	76560

## Target Details

---

UniProt: [Q9ESD1](#)

## Application Details

---

Application Notes: Optimal working dilution should be determined by the investigator.

Plate: Pre-coated

Restrictions: For Research Use only

## Handling

---

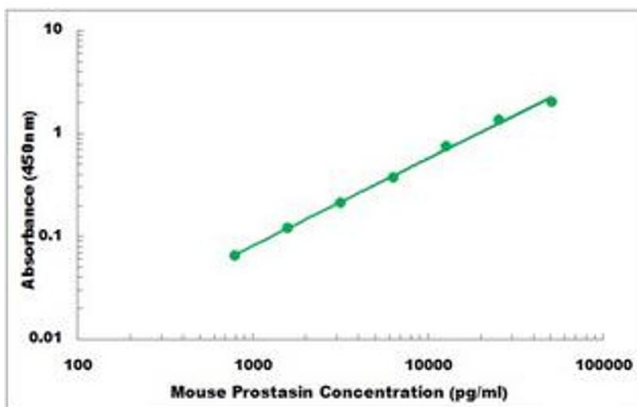
Storage: 4 °C, -20 °C

Storage Comment: Shipped and store at 4°C for 6 months, store at -20°C for one year.  
Avoid freeze/thaw cycles.

Expiry Date: 12 months

## Images

---



### ELISA

**Image 1.** Representative Standard Curve