



Datasheet for ABIN2708593

PTX3 ELISA Kit



[Go to Product page](#)

1 Image

Overview

| | |
|--------------------------|-----------------|
| Quantity: | 96 tests |
| Target: | PTX3 |
| Reactivity: | Mouse |
| Method Type: | Sandwich ELISA |
| Detection Range: | 156-10000 pg/mL |
| Minimum Detection Limit: | 156 pg/mL |
| Application: | ELISA |

Product Details

| | |
|--------------------|---|
| Purpose: | Sandwich ELISA for quantitative detection of Mouse PTX3 concentrations. |
| Sample Type: | Cell Culture Supernatant, Serum, Plasma |
| Analytical Method: | Quantitative |
| Detection Method: | Colorimetric |
| Sensitivity: | 10 pg/mL |

Target Details

| | |
|-------------------|---|
| Target: | PTX3 |
| Alternative Name: | PTX3 (PTX3 Products) |
| Background: | TNFAIP5, TSG14, Pentraxin-related protein PTX3, Pentaxin-related protein PTX3, Tumor necrosis factor alpha-induced protein 5, TNF alpha-induced protein 5, Tumor necrosis factor- |

Target Details

inducible gene 14 protein, TSG-14

Gene ID: 19288

UniProt: [P48759](#)

Application Details

Application Notes: Optimal working dilution should be determined by the investigator.

Plate: Pre-coated

Restrictions: For Research Use only

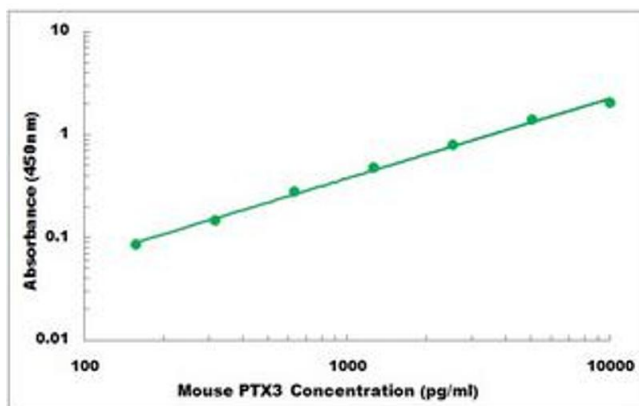
Handling

Storage: 4 °C, -20 °C

Storage Comment: Shipped and store at 4°C for 6 months, store at -20°C for one year.
Avoid freeze/thaw cycles.

Expiry Date: 12 months

Images



ELISA

Image 1. Representative Standard Curve