

Datasheet for ABIN2712315
PPP1R42 Protein (His tag)[Go to Product page](#)

1 Image

Overview

Quantity:	50 µg
Target:	PPP1R42
Origin:	Human
Source:	Escherichia coli (E. coli)
Protein Type:	Recombinant
Purification tag / Conjugate:	This PPP1R42 protein is labelled with His tag.
Application:	Antibody Production (AbP), Standard (STD)

Product Details

Characteristics:	<ul style="list-style-type: none">• Recombinant human LRRC67 (full length, N-term HIS tag) protein expressed in E.coli.• Produced with end-sequenced ORF clone
Purity:	> 80 % as determined by SDS-PAGE and Coomassie blue staining

Target Details

Target:	PPP1R42
Alternative Name:	Lrrc67 (PPP1R42 Products)
Background:	The protein encoded by this gene can interact with gamma-tubulin and PP1 phosphatase, a regulator of centrosome separation. The encoded protein is a positive regulator of PP1 phosphatase and thus plays a role in the control of centrosome integrity.
Molecular Weight:	26 kDa

Target Details

NCBI Accession: [NP_001013648](#)

Application Details

Application Notes: Recombinant human proteins can be used for:
Native antigens for optimized antibody production
Positive controls in ELISA and other antibody assays

Comment: The tag is located at the N-terminal.

Restrictions: For Research Use only

Handling

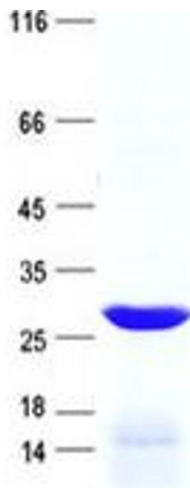
Concentration: 50 µg/mL

Buffer: 25 mM Tris, pH 8.0, 150 mM NaCl, 10 % glycerol, 1 % Sarkosyl.

Storage: -80 °C

Storage Comment: Store at -80°C. Thaw on ice, aliquot to individual single-use tubes, and then re-freeze immediately. Only 2-3 freeze thaw cycles are recommended.

Images



Western Blotting

Image 1. Validation with Western Blot