

Datasheet for ABIN2712344

## PHOSPHO1 Protein (Myc-DYKDDDDK Tag)



[Go to Product page](#)

### 1 Image

#### Overview

Quantity:	20 µg
Target:	PHOSPHO1
Origin:	Human
Source:	HEK-293 Cells
Protein Type:	Recombinant
Purification tag / Conjugate:	This PHOSPHO1 protein is labelled with Myc-DYKDDDDK Tag.
Application:	Antibody Production (AbP), Standard (STD)

#### Product Details

- Characteristics:
- Recombinant human PHOSPHO1 protein expressed in HEK293 cells.
  - Produced with end-sequenced ORF clone

Purity: > 80 % as determined by SDS-PAGE and Coomassie blue staining

#### Target Details

Target:	PHOSPHO1
Alternative Name:	Phospho1 ( <a href="#">PHOSPHO1 Products</a> )
Background:	Phosphatase that has a high activity toward phosphoethanolamine (PEA) and phosphocholine (PCho). Involved in the generation of inorganic phosphate for bone mineralization. [UniProtKB/Swiss-Prot Function]
Molecular Weight:	29.5 kDa

## Target Details

---

NCBI Accession: [NP\\_848595](#)

## Application Details

---

Application Notes: Recombinant human proteins can be used for:  
Native antigens for optimized antibody production  
Positive controls in ELISA and other antibody assays

Comment: The tag is located at the C-terminal.

Restrictions: For Research Use only

## Handling

---

Concentration: 50 µg/mL

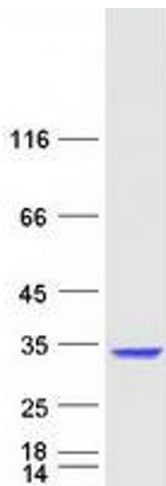
Buffer: 25 mM Tris.HCl, pH 7.3, 100 mM glycine, 10 % glycerol.

Storage: -80 °C

Storage Comment: Store at -80°C. Thaw on ice, aliquot to individual single-use tubes, and then re-freeze immediately. Only 2-3 freeze thaw cycles are recommended.

## Images

---



### Western Blotting

**Image 1.** Validation with Western Blot