

Datasheet for ABIN2712361

LAMTOR2 Protein (Transcript Variant 1) (Myc-DYKDDDDK Tag)[Go to Product page](#)**1** Image

Overview

Quantity:	20 µg
Target:	LAMTOR2
Protein Characteristics:	Transcript Variant 1
Origin:	Human
Source:	HEK-293 Cells
Protein Type:	Recombinant
Purification tag / Conjugate:	This LAMTOR2 protein is labelled with Myc-DYKDDDDK Tag.
Application:	Antibody Production (AbP), Standard (STD)

Product Details

Characteristics:	<ul style="list-style-type: none">• Recombinant human ROBLD3 (transcript variant 1) protein expressed in HEK293 cells.• Produced with end-sequenced ORF clone
Purity:	> 80 % as determined by SDS-PAGE and Coomassie blue staining

Target Details

Target:	LAMTOR2
Alternative Name:	Robld3 (LAMTOR2 Products)
Background:	The product of this gene is highly conserved with a mouse protein associated with the cytoplasmic face of late endosomes and lysosomes. The mouse protein interacts with MAPK scaffold protein 1, a component of the mitogen-activated protein kinase pathway. In humans, a mutation in this gene has been associated with a primary immunodeficiency syndrome, and

Target Details

suggests a role for this protein in endosomal biogenesis. Multiple transcript variants encoding different isoforms have been found for this gene.

Molecular Weight: 13.3 kDa

NCBI Accession: [NP_054736](#)

Pathways: [PI3K-Akt Signaling](#)

Application Details

Application Notes: Recombinant human proteins can be used for:
Native antigens for optimized antibody production
Positive controls in ELISA and other antibody assays

Comment: The tag is located at the C-terminal.

Restrictions: For Research Use only

Handling

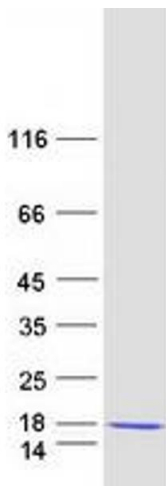
Concentration: 50 µg/mL

Buffer: 25 mM Tris.HCl, pH 7.3, 100 mM glycine, 10 % glycerol.

Storage: -80 °C

Storage Comment: Store at -80°C. Thaw on ice, aliquot to individual single-use tubes, and then re-freeze immediately. Only 2-3 freeze thaw cycles are recommended.

Images



Western Blotting

Image 1. Validation with Western Blot